

Great North Road Solar and Biodiversity Park


Phase One Consultation Materials - Part 1 of 5

Document reference - EN010162/APP/5.1.3

Revision number 1

June 2025

Infrastructure Planning (Applications: Prescribed Forms and Procedure)
Regulations 2009, APFP Regulation 5(2)(q)



Contents

1	Phase One Community Consultation Postcard
2	Phase One Consultation Leaflet
3	Phase One Consultation Newspaper Adverts (Placed in the Newark Advertiser and Nottingham Post).....
4	Phase One Consultation Feedback Form.....
5	Phase One Consultation Exhibition Materials
6	Phase One Consultation Poster.....
7	Phase One Consultation Masterplan
8	Phase One Consultation Detailed Masterplan Sheets (Sites 1 to 9).....
9	Phase One Consultation Environmental Designations
10	Phase One Consultation Constraints Map.....
11	Phase One Consultation Community Webinar Slides.....
12	Phase One Consultation Energy Efficiency Form.....
13	NG+ Materials

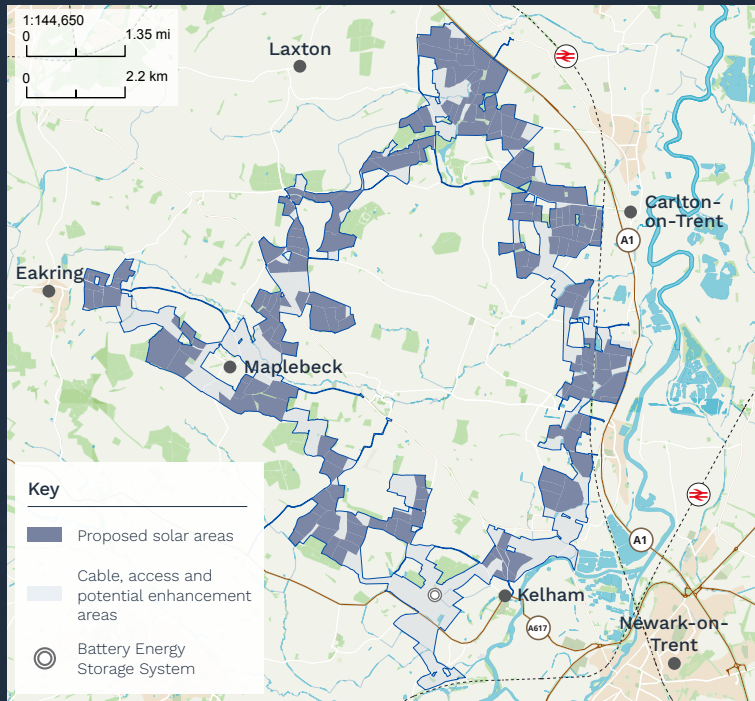
1 PHASE ONE COMMUNITY CONSULTATION POSTCARD

Great North Road Solar Park

Community consultation – 16 January to 27 February 2024

Elements Green is introducing plans for Great North Road Solar Park, a solar development that could deliver 800 megawatts (MW) AC of clean energy to national grid.

You are invited to take part and provide your feedback on the project during our first phase of community consultation: 16 January – 27 February 2024.



To view an illustrative masterplan of the site please go to our website or attend one of our events.



Information Exhibitions

Join us at any of our in-person or online events to meet the project team, learn more about GNR Solar Park, and provide your feedback.

Date	Location
Monday 29 January 5:30pm - 7pm	Community webinar
Tuesday 30 January 12pm - 6pm	Eakring Cator Hall , Kirklington Road, Eakring, NG22 0DA
Wednesday 31 January 2pm - 6pm	Laxton Village Hall , High St, Laxton, Newark, NG22 0NX
Thursday 01 February 12pm - 6pm	Newark Town Hall , Newark, Nottinghamshire, NG24 1DU
Monday 05 February 5:30pm - 7pm	Community webinar
Thursday 08 February 2pm - 6pm	Carlton on Trent Village Hall , Main Street, Carlton-on-Trent, Newark, NG23 6NW
Friday 09 February 2pm - 8pm	Maplebeck Village Hall , Main Street, Maplebeck, Newark, NG22 0BS
Saturday 10 February 12pm - 5pm	Kelham House Country Manor , Main Street, Kelham, Newark, NG23 5QP

Have Your Say

We want to hear your feedback on our early proposals to help inform and influence the final designs. You can submit a feedback form at any of the information events, online by visiting our website, or by email or freepost at the address below.

The deadline to submit feedback is
27 February 2024.

Get in Touch



Email: info@gnrsolarpark.co.uk



Call: Freephone 0808 175 4054



Write: Freepost GNR Solar



Visit: www.GNRsolarpark.co.uk



Return address if undelivered:
5th Floor, St. James House, Vicar Lane, Sheffield S1 2EX

2 PHASE ONE CONSULTATION LEAFLET

Great North Road Solar Park

Phase One Community Consultation Leaflet



January 2024



Introduction

Elements Green is developing proposals for a new solar and energy storage park located to the northwest of Newark-on-Trent, Nottinghamshire.

With a potential generation capacity of around 800 megawatts (MW) AC of solar energy, the scheme has the potential to provide enough clean, affordable energy to meet the power needs of approximately 400,000 homes while avoiding more than 250,000 tonnes of CO₂ emissions every year.

This consultation leaflet introduces who we are, our proposals for Great North Road Solar Park and how you can get involved in our first stage of community consultation. Our Stage One consultation starts on Tuesday 16th January 2024. It will run for six weeks, closing on Tuesday 27th February 2024.

Further to developing more detailed proposals for the project, we will then carry out a second stage of consultation. This will be a statutory stage of consultation which is intended to give you the opportunity to comment on our updated proposals and how they have evolved since the initial consultation. Stage Two consultation is expected to take place later this year.

Who we are

The proposals for Great North Road Solar Park are being developed by Elements Green, who has a proven track record in renewable energy development, with 7 gigawatts (GW) of renewable energy development projects globally.

We are committed to powering the world’s future energy needs. Using our deep understanding of the renewables sector, we are delivering innovative and sustainable solutions for global energy security and the needs of a rapidly evolving world.

Great North Road Solar Park

Great North Road (GNR) Solar Park would comprise the installation of solar photovoltaic (PV) panels, an on-site energy storage facility and the infrastructure needed to connect the scheme into the national grid.

The location

The project is proposed to be located on approximately 2,900 hectares (7,166 acres) of land to the northwest of Newark, Nottinghamshire.

A key factor influencing the location of GNR Solar Park is the availability of a connection at National Grid’s Staythorpe substation. The closure of fossil fuel power stations has created capacity on the grid. The site location was further refined through a range of planning and environmental factors, such as the existing land use, quality of land, and technical constraints. The project boundaries are naturally shaped by the River Trent to the east, Sherwood Forest to the west, the historic landscape of Laxton to the north, and the protected views of Southwell to the south. High flood risk zones, protected ecological and landscape sites, high grade agricultural land and adverse topography have been avoided in order to select the most suitable land for the project.

The components of a solar farm

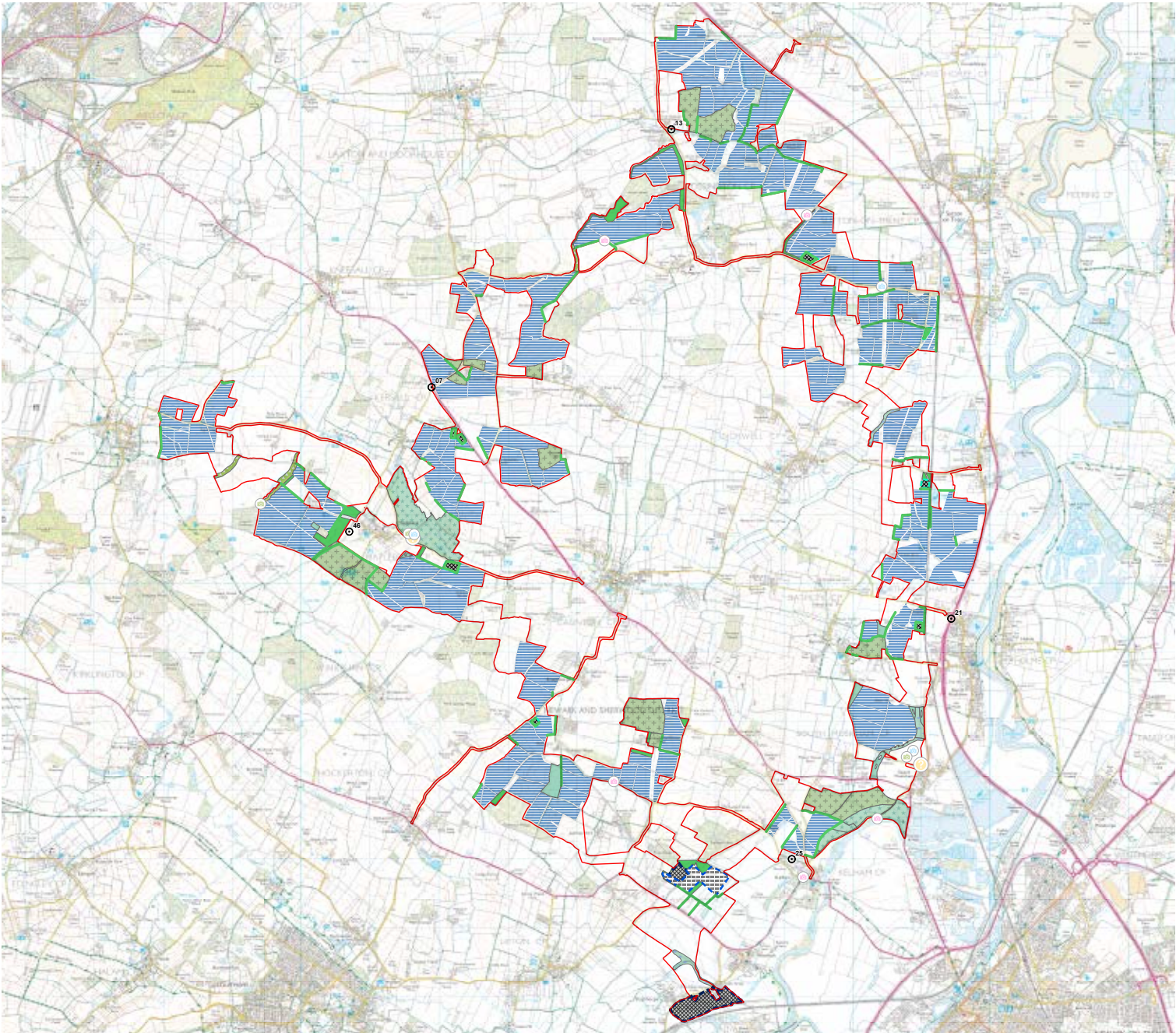
The development we are proposing would comprise the installation of solar photovoltaic (PV) panels and an on-site energy storage facility. The energy storage system would deliver significant efficiency, whereby electricity generated by the solar PV panels could be stored in batteries at times when demand for electricity is low, and then released on to the grid at times of higher demand.

This serves to improve reliability, efficiency, and cost-effectiveness of electricity supply by providing an important balancing service for the national grid.

The principle components of the scheme we are proposing are shown in the diagram below.



Solar technology is rapidly evolving; therefore, our application will include flexibility to allow us to use the latest technology available at the time of construction.



Key

- Order Limits
- Proposed Solar Panel Areas (1) - typically offset approximately 10m from field boundaries
- Proposed 400kV Substation Areas (2)
- Proposed BESS Area (2)
- Proposed Substation Areas (2)
- Viewpoint Locations
- Landscape & Ecology**
 - Proposed Hedgerows and Broadleaf Woodland (5) (6)
 - Retained Agricultural Land - enhanced ecological management (7)
 - Proposed Permanent Grassland (8)
 - Proposed Green Corridor (9)
 - Proposed Riparian Corridor (9)
 - Proposed Wildlife Site (10)
- Visitor Interpretation**
 - Clean Energy Information (14)
 - Ecology/Landscape Information (14)
 - Heritage Information (14)
 - Solar Farm Visitor Hub (13)



The benefits of Great North Road Solar Park

If approved and constructed, GNR Solar Park could make significant impacts on national and local priorities and initiatives.



Contributing to national and local climate targets

The UK has set ambitious and legally binding targets to eliminate carbon emissions by 2050. Large scale solar development is recognised as having an important role to play in helping achieve this target.

The British Energy Security Strategy, published in April 2022, aims to increase the UK's solar capacity fivefold by 2035, equivalent to around 70GW total generation capacity. With an installed capacity of over one gigawatt (GW) DC, GNR Solar Park would contribute 1.5 per cent towards this target.

Subject to being consented and becoming operational, GNR Solar Park would make a significant contribution towards achieving this goal: generating clean, affordable, electricity that would annually avoid around 250,000 tonnes of carbon emissions from entering our atmosphere.



Supporting the local community

Subject to consent being granted, Great North Road Solar Park would offer a community benefit package – known as NG+, which has the potential to make available around £1 million per annum. With this fund, NG+ will support and deliver projects to benefit the local community with a focus on the environment, education, food security, wellbeing, and energy efficiency.

We are committed to working with local communities to identify and define community benefits. This could include:

- Supporting projects to enhance woodlands, meadows, wetlands and hedgerows to promote biodiversity
- Creating local jobs in the Midlands and Lincolnshire
- Providing educational opportunities such as school visits, research funding and apprenticeships
- Enhancing local amenities and creating healthier spaces, such as picnic and play areas and linking new and existing footpaths
- Tackling food poverty and reducing food waste
- Offering grants for energy-related home improvements such as insulation, solar panels and heat pumps.



Helping reduce household bills and providing energy security

The price of solar panels has dropped significantly over recent years, making solar power the most cost-effective source of energy to produce. The transition to renewable forms of energy, therefore, can help the UK to become more energy self-sufficient, while also reducing household energy bills for years to come.

Solar parks such as the proposed Great North Road Solar Park advance energy efficiency, providing clean, renewable, and sustainable electricity to communities, and NG+ wants to take this further.

We will be offering grants for energy-related home improvements such as insulation, solar panels, LED lighting, EPC provision, and heat pumps. We are also keen to support innovation in this area by providing funding for green startup businesses. We will also offer business grants for related measures, with the aim to support local employment.



Protecting the local environment

Solar farms can deliver significant benefits for the local environment and support a range of ecosystem services, such as generating new habitats, supporting sustainable agriculture, and reducing carbon emissions.

While we have not yet reached a stage of having an exact estimate of the biodiversity net gain for GNR Solar Park, our ambition is to exceed this baseline requirement. The proposals we develop will set aside areas for environmental enhancements that will create new or enhance existing habitats. These could include establishing wildflower meadows to provide habitats for pollinators and birds, promoting wetland habitats that support aquatic life, and new planting to preserve, restore and deliver new hedgerows and native species.

We are keen to hear from you regarding any suggestions and ideas you might have to enhance the natural environment.

Our consultation process

Great North Road Solar Park is classified as a Nationally Significant Infrastructure Project (NSIP) because it would generate more than 50 megawatts (MW) of electricity.

The 2008 Planning Act defines the consent regime for a NSIP. This means that we will be applying for a Development Consent Order (DCO) through the Planning Inspectorate (PINS). The application will be determined by the Secretary of State for the Department of Energy Security and Net Zero (DESNZ).

A DCO application is planned to be submitted in Spring 2025. Prior to this, we will be engaging with local communities and consulting on and refining our proposals across two stages of consultation, including:

- The first phase of consultation now underway is non-statutory. While not formally required, it is intended to give local communities a real opportunity to influence the proposed development from an early stage to gain a better understanding of what we are proposing and its potential impacts.
- During the second, statutory phase of consultation, we will provide more information on the developing proposals which have been informed by the first phase of consultation and environmental assessments. We expect to conduct this consultation in Autumn 2024.

Ahead of our Stage Two consultation, we will consult with relevant local planning authorities to invite their views on the approach we intend to take to engage with and obtain feedback from local communities on our detailed proposals for GNR Solar Park. This will be set out in our Statement of Community Consultation (SoCC) which will be published just ahead of the second stage of consultation.

We are committed to working with local communities throughout the development of the project, and beyond, should the project be granted consent. We are keen to hear your feedback to shape a strong set of proposals.

Community consultation forms an important part of the pre-application process for NSIPs. Early and ongoing engagement will influence the evolving design of GNR Solar Park. Local councils, residents and community groups all have an important part to play.

Our first phase of community consultation

Our Stage One consultation on our early-stage proposals will begin on 16 January 2024.

The aim of this consultation is to introduce Elements Green and the overall project, share our early-stage proposals and give you the opportunity to have your say and share your views.

We value local knowledge, and we are confident that this consultation will result in a strong set of proposals that respect the concerns of local communities while generating clean, renewable energy.

We will acknowledge and record all the comments submitted to us during consultation taking them into consideration to help inform our decisions as we evolve and finalise our proposals.

Learn more about our proposals and provide your feedback to our Stage One consultation in the following ways:



Join us at our exhibition events and webinars

We are holding a series of information events across the site area where you can view materials, ask questions to the project team, and provide your feedback.



Visit our project website

Our dedicated website (www.gnrsolarpark.co.uk) provides the latest project information, including relevant documents and answers to frequently asked questions (FAQs). You can view and download all consultation materials and complete an online feedback form via our website.



Contact us via our communication lines

Email: info@gnrsolarpark.co.uk

Call: Freephone 0808 1754054

Write: FREEPOST GNR SOLAR

The deadline to submit feedback during this first phase of consultation is **Tuesday 27 February 2024.**

Exhibition events and webinars

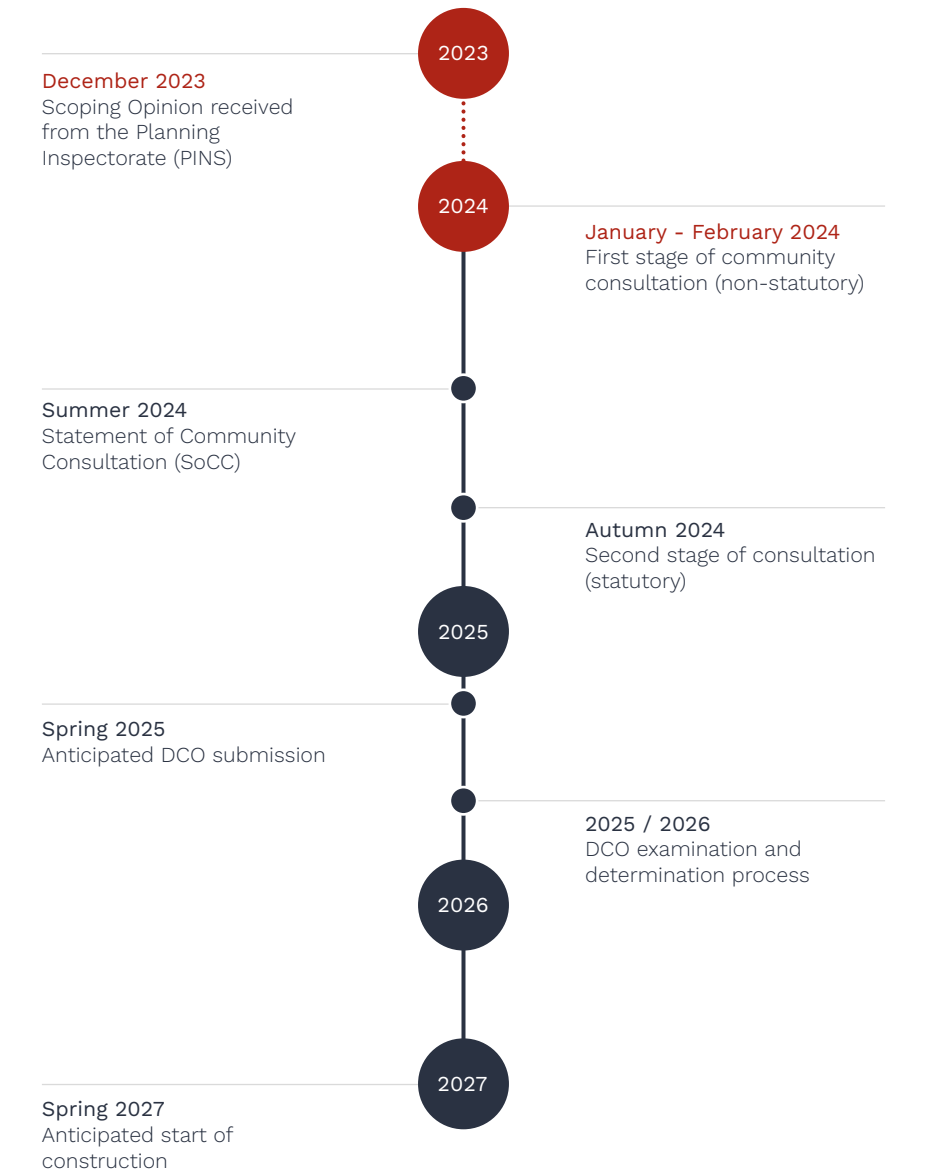
Our first stage of community consultation will feature a series of both in-person and online exhibition events, providing opportunities for the community and key stakeholders alike to find our more information about our proposals and provide their feedback.

We will be holding a total of eight events during our first stage of community consultation, this includes six in-person events and two online webinars, between Monday 29th January and Saturday 10th February.

We encourage anyone with an interest in these proposals to join us at one of our exhibition events to learn more about the scheme and provide your feedback.

Date	Location
Monday 29 January 5:30pm – 7pm	Community webinar
Tuesday 30 January 12pm – 6pm	Eakring Cator Hall, Kirklington Road, Eakring, NG22 0DA
Wednesday 31 January 2pm – 6pm	Laxton Village Hall, High St, Laxton, Newark, NG22 0NX
Thursday 01 February 12pm – 6pm	Newark Town Hall, Newark, Nottinghamshire, NG24 1DU
Monday 05 February 5:30pm – 7pm	Community webinar
Thursday 08 February 2pm – 6pm	Carlton on Trent Village Hall, Main Street, Carlton-on-Trent, Newark, NG23 6NW
Friday 09 February 2pm – 8pm	Maplebeck Village Hall, Main Street, Maplebeck, Newark, NG22 0BS
Saturday 10 February 12pm – 5pm	Kelham House, Main Street, Kelham, Newark, NG23 5QP

Indicative project timeline



**Please note this timeline is indicative and may be subject to change*



Contact Us

We want to keep you informed and hear your views on Great North Road Solar Park.

We have established dedicated communication lines for the project, which will be active for the duration of consultation on GNR Solar Park. You can get in touch with members of our stakeholder engagement team using any of the communication lines listed below:



Email: info@gnrsolarpark.co.uk



Call: Freephone 0808 175 4054



Write: Freepost GNR Solar



Visit: www.GNRsolarpark.co.uk



3 PHASE ONE CONSULTATION NEWSPAPER ADVERTS (PLACED IN THE NEWARK ADVERTISER AND NOTTINGHAM POST)

Hospitals bring back face mask rules

By Eloise Gilmore
e.gilmore@liffepublishing.co.uk

Face mask rules have been reintroduced at a number of hospitals after a rise in respiratory conditions among patients and staff.

Masks have been reintroduced in all clinical areas and all clinical waiting areas at Newark Hospital and at Sherwood Forest Hospitals NHS Foundation Trust's two other sites, King's Mill Hospital and Mansfield Community Hospital.

The new guidance came into effect last week following an increase in respiratory conditions, including covid-19 and flu, among patients and trust

employees.

Patients, visitors and employees at the hospitals are now being asked to wear masks, which are available from stations throughout the hospitals, at all times in clinical areas and waiting areas to protect themselves and others.

People who are preparing to visit are urged not to do so if they have any signs of illness, particularly if they have any cold, flu or covid-like symptoms, diarrhoea or vomiting in the past three days, or if they have been in contact with anyone who has had these types of illness.

Rates of infection are kept under constant review and the trust said that

studies indicated that re-introducing the wearing of masks is one of the ways to prevent the spread of infection.

A hospital trust spokesman said: "It is vital that we take decisive action to protect our most vulnerable patients, visitors and colleagues to ensure we can keep vital services running for all those that need them over the coming weeks."

Staff, patients and visitors are also being encouraged to wash their hands frequently with soap and water and use the alcohol gel provided, in addition to wearing facemasks, to help reduce the spread of infections.

Face mask requirements will be kept under constant review.



The 2023 Bracken Farm Wassail.

Ancient orchard tradition

The ancient tradition of wassailing is to be honoured this month.

A traditional Wassailing of the Cider Apple Orchard at Bracken Farm, North Muskham, will be held on January 20.

Held from 5pm to 8pm the event, held at the home of the BrackenXcapes glamping site, will include folk music from The Malt Whiskers, Morris dancing by the Trent Side Morris Dancers and Rattlejag, music by some members of the Basket Case folk singers and the village's well-known Pinkies performing one of their plough plays.

The event is free to attend, and visitors are encouraged to dress up and bring something to make a loud noise when walking round the orchard to help scare away the evil spirits.

Rattles, pans and wooden sticks, or bells all are suitable for the Wassail.

The annual Wassail is traditionally held to bless the orchard for a good harvest by scaring away spirits, and dates back to Anglo-Saxon times.

Expanding group's interests in the new year

The new year has brought new opportunities to a community group.

Southwell U3A's new interest groups, launched at the end of 2023, are now flourishing, with more for members to get involved in.

One new group is focused on geopolitics, the study of the relationship between geography, power, politics

and international relations.

The group meets at the Admiral Rodney in Southwell for discussion, debate, sharing of research, ideas, facts and "unknowns" about global issues.

It assures that plenty of laughter is included, despite the serious nature of the topics discussed.

The film appreciation

group has proved so successful that there's now a similar one called 'film extra'.

There are monthly visits by bus to the Broadway Cinema in Nottingham, where members can watch films of their choice.

After, members head into the Broadway Café for a post-film discussion.

Also, the new quiz group

is meeting at the Hearty Goodfellow pub in Southwell.

Members take turns to prepare an hour-long quiz, which can take the form of questions, pictures, artefacts or whatever they choose.

The winning team takes a share of the £1 per member entry fee, with time to socialise afterwards.

Great North Road Solar Park

Community consultation – 16 January to 27 February 2024



Elements Green is introducing plans for Great North Road Solar Park, with a potential generation capacity of around 800 megawatts (MW) AC of solar energy, the scheme has the potential to meet the power needs of circa 400,000 homes, equivalent to 100 per cent of the homes in Nottinghamshire.

You are invited to take part and provide your feedback on the project during our first phase of community consultation: 16 January – 27 February 2024.

Information Events

Location

Community Webinar, Online

Eakring Cator Hall, Kirklington Road, Eakring, NG22 0DA

Laxton Village Hall, High Street, Laxton, Newark, NG22 0NX

Newark Town Hall, Newark, Nottinghamshire, NG24 1DU

Community Webinar, Online

Carlton on Trent Village Hall, Main Street, Carlton on Trent, Newark, NG23 6NW

Maplebeck Village Hall, Main Street, Maplebeck, Newark, NG22 0BS

Kelham House Country Manor, Main Street, Kelham, Newark, NG23 5QP

Date and time

Monday 29 January
5:30pm – 7pm

Tuesday 30 January
12pm – 6pm

Wednesday 31 January
2pm – 6pm

Thursday 01 February
12pm – 6pm

Monday 05 February
5:30pm – 7pm

Thursday 08 February
2pm – 6pm

Friday 09 February
12pm – 8pm

Saturday 10 February
12pm – 5pm

Details on how to access our Community Webinar can be found on our website: www.gnrsolarpark.co.uk.

Have Your Say

We want to hear your feedback on our early proposals to help inform and influence the final designs. You can submit a feedback form at any of the information events, online by visiting our website, or by email or freepost at the address below.

The deadline to submit feedback is 27 February 2024.

Get in Touch

Visit: www.GNRSolarpark.co.uk

Call: Freephone 0800 175 4054

Email: info@gnrsolarpark.co.uk

Write: Freepost GNR Solar



The Bromley at Fiskerton

Opening times

Sunday - Thursday

11.30am till 10pm

Friday and Saturday

11.30am till 11pm

Serving food times

12pm - 9pm **Monday - Saturday**

12pm - 6pm **Sunday**

01636 830789



Main Street, Fiskerton, Southwell, NG25 0HL



New lunch menu now available.

01636 925598 | Main Street, Coddington, Newark, NG24 2PS

Return of Pronto 'vomit comet'?

COUNCILLOR HAILS POSITIVE NEWS ON LATE BUS



A Pronto bus
MARIE WILSON

By LANA ADKIN
@reachplc.com

A "VITAL" Nottingham bus service could have its timetable expanded for a later service.

The late-night Pronto bus service run by Stagecoach could return in an expanded timetable this year.

Mansfield Councillor Ben Brown gave an update about the potential expansion of the service, which runs between Chesterfield, Mansfield and Nottingham. Councillor Brown says the Pronto used to run until 3am however the bus only currently runs until 10.05pm.

The Conservative councillor approached Stagecoach about the service and they confirmed that "over the summer of 2024, we plan to re-establish more bus services in the evenings and at weekends,

and this plan is likely to include expanding the Pronto timetable".

Councillor Brown said: "Last month I wrote to Stagecoach to try and find out what is going on with their late-night Pronto service between Mansfield and Nottingham. Many will remember the late-night bus which used to run until 3am.

"This week I received a response from Stagecoach's commercial director. He confirmed that bus passenger numbers are back up to around 80 percent of pre-Covid level.

"More importantly, he has confirmed that 'over the summer of 2024, we plan to re-establish more bus services in the evenings and at weekends, and this plan is likely to include expanding the Pronto timetable'.

"I will keep on at them, but it's a

very positive response from Stagecoach and reading between the lines, we may well see a return of the 'vomit comet' later in the year. Given the lack of late-night trains and the high prices of taxis at that time of night, the late-night Pronto was a vital link between Mansfield and Nottingham and had obvious commercial and social benefits!"

A Stagecoach spokesperson said: "We are constantly monitoring travel demand across our bus network and we have been listening to customer feedback about the possibilities for later journeys between Mansfield and Nottingham on our Pronto route.

"As we move into the summer, we will be looking to run some additional evening services in and out of Nottingham and information will be available for customers nearer the time."

Community routes set for axe this month

SOME community bus services have been withdrawn in Nottingham.

Routes from the city to Lenton and Wollaton will be discontinued from Monday, January 29, CT4N says.

The operator, run by a charitable trust, announced alterations to a further eight services.

The L5, which travels between the Victoria Centre and Oundle Drive in Wollaton three days a week, calling at Nottingham Station and the Queen's Medical Centre, will be withdrawn.

CT4N said it would be replaced in part by the new 20 service on Tuesdays and Fridays.

"Customers living on Middleton Boulevard are reminded that Service L2 operates Monday to Saturday and Easylink is available for those with limited mobility issues," it added.

The W1, between the city centre and Lenton Lane Industrial Estate from 6.50am to 8.38am on Monday to Friday, will also be axed.

CT4N said: "There are connections via NET The Tram or Nottingham City Transport Service 49 dependent on which end of the estate you are located."

Other changes involve the Medilink service, to reflect shift changes at the QMC.

Ex-teacher back in court over indecent images of children

A FORMER Nottinghamshire teacher convicted for possessing indecent images of children has been hauled back before the courts.

Fraser McDonald Smith, was made the subject of an indefinite sexual harm prevention order (SHPO) in May 2021 after police raided his home in Edgehill Grove, Mansfield Woodhouse.

Officers found one Category A – the most extreme – video and five Category B videos on his phone and a hard drive.

He admitted two counts of making an indecent image of a child and in addition to the SHPO was jailed for four months, suspended for two years.

However, weeks later, McDonald Smith failed to disclose items capable of accessing the internet and storing digital images, in July 2021.

Officers again raided his home and found seven devices that could either access the internet and/or store digital images that he had not disclosed.

He was given a nine-month prison sentence, suspended for two years, at Nottingham Crown Court on January 9.

The judge told McDonald Smith that the sentence was suspended because he had pleaded guilty, had complied with other aspects of the order and had committed no further offences since the breach came to light.

McDonald Smith also has a previous child pornography offence, dating back to 2005, when he was given a three-year community order with specialist supervision after admitting 17 counts of making indecent images of children.



Nottingham Crown Court

Great North Road Solar Park

Community consultation – 16 January to 27 February 2024



Elements Green is introducing plans for Great North Road Solar Park, with a potential generation capacity of around 800 megawatts (MW) AC of solar energy, the scheme has the potential to meet the power needs of circa 400,000 homes, equivalent to 100 per cent of the homes in Nottinghamshire.

You are invited to take part and provide your feedback on the project during our first phase of community consultation: 16 January – 27 February 2024.

Information Events

Location	Date and time
Community Webinar, Online	Monday 29 January 5:30pm – 7pm
Eakring Cator Hall, Kirklington Road, Eakring, NG22 0DA	Tuesday 30 January 12pm – 6pm
Laxton Village Hall, High Street, Laxton, Newark, NG22 0NX	Wednesday 31 January 2pm – 6pm
Newark Town Hall, Newark, Nottinghamshire, NG24 1DU	Thursday 01 February 12pm – 6pm
Community Webinar, Online	Monday 05 February 5:30pm – 7pm
Carlton on Trent Village Hall, Main Street, Carlton on Trent, Newark, NG23 6NW	Thursday 08 February 2pm – 6pm
Maplebeck Village Hall, Main Street, Maplebeck, Newark, NG22 0BS	Friday 09 February 12pm – 8pm
Kelham House Country Manor, Main Street, Kelham, Newark, NG23 5QP	Saturday 10 February 12pm – 5pm

Details on how to access our Community Webinar can be found on our website: www.gnrsolarpark.co.uk.

Have Your Say

We want to hear your feedback on our early proposals to help inform and influence the final designs. You can submit a feedback form at any of the information events, online by visiting our website, or by email or freepost at the address below.

The deadline to submit feedback is 27 February 2024.

Get in Touch

Visit: www.GNRSolarpark.co.uk

Write: Freepost GNR Solar

Email: info@gnrsolarpark.co.uk

Call: Freephone 0808 175 4054

As I See It

All round good news for bus passengers

Confident of a balanced budget in challenging time

Firstly, I'd like to take this opportunity to thank everyone who took part in our Annual Budget Survey in the autumn, writes **Richard Jackson, cabinet member for finance at Nottinghamshire County Council.**

By doing so, you are helping us to make the right decisions on how Nottinghamshire County Council spends its allocated budget, shape how we maintain frontline services and deliver what residents have asked for.

Almost 4,000 people completed the survey, a 59% increase on the previous year — so thank you once again, it really is much appreciated by myself and my colleagues.

As I have said previously, we are acutely aware that residents are experiencing

financial pressures and we are doing everything we can to strike the right balance between easing them and continuing vital services for vulnerable residents.

Local authorities are facing significant financial challenges to balance the books against a backdrop of rising costs due to global pressures that have driven up the cost-of-living such as increased inflation and energy costs.

However, we have a proven track record over a significant period in delivering savings while maintaining and delivering high-quality frontline services — and this council continues to be in a relatively strong financial position.

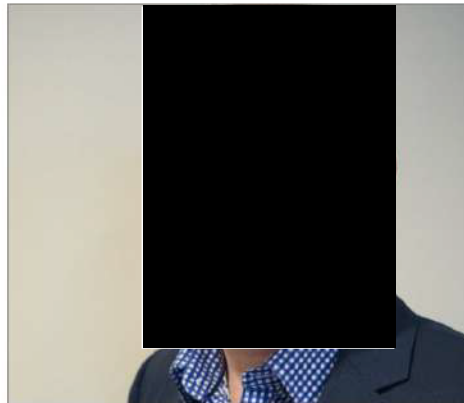
This does not mean we are resting on our laurels, though, and, to ensure we are offering the best

possible value for money, we are looking very carefully at our core functions and services.

We also want to work more closely with our communities, local groups and parish and district/borough councils to get the best value for money, reducing duplication, and playing more of a role in facilitating the work of local groups who are working in some of our key service areas, such as working with young people or vulnerable adults.

By doing this, we can protect key services, be more sustainable, ensure best value as well as focusing our own resources on the communities and services which need them the most.

I am confident of presenting a balanced budget to Full Council in a



few weeks' time, which will set out how we will maintain services and make ourselves more efficient and sustainable in the long-term.

It's a constant challenge to

find the balance but we have a good track record of streamlining and rationalising our building estate to make the efficiencies we need for the year ahead.

A busticket that can be used to get around on more than 15 bus services in Newark has been launched.

The All Rounder ticket means passengers can travel on any bus in the network using just one ticket, and aims to make travelling in the area simpler for residents and visitors.

Nottinghamshire County Council has worked with bus operators Stagecoach, Vectare, Gem Mini Travel, Marshalls, CT4N and Centrebus on the project.

The All Rounder ticket is valid within a set zone and a map can be found on the county council's website along with information on fares for adults, under 22s and children.

Neil Clarke, the council's cabinet member for transport and environment, said: "We want to make travelling by bus as simple as possible for Nottinghamshire residents and that is why we have launched the All Rounder ticket in Newark."

All day travel with the All Rounder costs £4.20.

Stay in the loop...

Keep up to date with new building developments or proposed road closures in your area

For this and much more, turn to the public notices pages in the Classified section of this paper or visit the Public Notice Portal online to search the latest applications

Go to **publicnoticeportal.uk** or scan the QR code



Great North Road Solar Park

Community consultation – 16 January to 27 February 2024



Elements Green is introducing plans for Great North Road Solar Park, with a potential generation capacity of around 800 megawatts (MW) AC of solar energy, the scheme has the potential to meet the power needs of circa 400,000 homes, equivalent to 100 per cent of the homes in Nottinghamshire.

You are invited to take part and provide your feedback on the project during our first phase of community consultation: 16 January – 27 February 2024.

Information Events

Location	Date and time
Community Webinar, Online	Monday 29 January 5:30pm – 7pm
Eakring Cator Hall, Kirklington Road, Eakring, NG22 0DA	Tuesday 30 January 12pm – 6pm
Laxton Village Hall, High Street, Laxton, Newark, NG22 0NX	Wednesday 31 January 2pm – 6pm
Newark Town Hall, Newark, Nottinghamshire, NG24 1DU	Thursday 01 February 12pm – 6pm
Community Webinar, Online	Monday 05 February 5:30pm – 7pm
Carlton on Trent Village Hall, Main Street, Carlton on Trent, Newark, NG23 6NW	Thursday 08 February 2pm – 6pm
Maplebeck Village Hall, Main Street, Maplebeck, Newark, NG22 0BS	Friday 09 February 2pm – 8pm
Kelham House Country Manor, Main Street, Kelham, Newark, NG23 5QP	Saturday 10 February 12pm – 5pm

Details on how to access our Community Webinar can be found on our website: www.gnrsolarpark.co.uk.

Have Your Say

We want to hear your feedback on our early proposals to help inform and influence the final designs. You can submit a feedback form at any of the information events, online by visiting our website, or by email or freepost at the address below.

The deadline to submit feedback is 27 February 2024.

Get in Touch

- Visit: www.GNRSolarPark.co.uk
- Call: Freephone 0808 175 4054
- Email: info@gnrsolarpark.co.uk
- Write: Freepost GNR Solar



4 PHASE ONE CONSULTATION FEEDBACK FORM

Great North Road Solar Park

Community Consultation: Tuesday 16th January to Tuesday 27th February

Phase One Consultation Feedback Form

Elements Green is developing proposals for an 800 megawatt (MW) AC solar park on land to the northwest of Newark-on-Trent, Nottinghamshire.

Have your say

We are inviting you to take part in this first stage of community consultation and provide your feedback on our emerging proposals for the Great North Road Solar Park and its connection to the national grid substation at Staythorpe.

We will acknowledge and record all the comments submitted to us during consultation, taking them into consideration to help inform our decisions as we evolve and finalise our proposals.

You can provide your feedback using this form, online by visiting our website, or contacting us by email or freepost at the address below:



Visit: www.GNRsolarpark.co.uk



Email: info@gnrsolarpark.co.uk



Call: Freephone 0808 175 4054

If you have any questions or would like guidance in responding to this consultation, please contact us by email at info@gnrsolarpark.co.uk or by calling the community relations team by freephone on 0808 1754054.

Please note that the deadline for the submission of feedback is Tuesday 27th February 2024 (on or before this date).

You do not have to supply personal details; however, it will enable us to contact you regarding your feedback, if necessary. Your personal details will be stored in compliance with the GDPR by Counter Context, acting on behalf of Elements Green, and will not be shared with any third parties.



About you

Name:

Organisation: (if applicable)

Address:

Postcode:

Email Address:

Telephone:

Would you like us to keep you updated?

Please let us know if you agree for us to contact you with any future updates regarding the project. This may include sharing the results of this phase of consultation with you and notifying you of any future consultation opportunities. If you agree to being contacted, please provide your email address and/or postal address above and confirm your preferred contact method below.

☐

I would like to be kept informed of project updates

☐

Please contact me by email

☐

Post

What is your age?

☐

Under 18

☐

18-24

☐

25-34

☐

35-44

☐

45-54

☐

55-64

☐

65-74

☐

75 and over

☐

Prefer not to say

General

1.) How would you describe your interest in Great North Road Solar Park?

☐

Local resident

☐

Local representative

☐

Landowner

☐

Local business owner

☐

Regular visitor

☐

Local interest group (if so, please name)

☐

Statutory organisation (if so, please name)

☐

Other (please specify)

2.) As a principle, what is your view of installing ground-mounted solar infrastructure in the UK?

☐

I agree with the need to install ground-mounted solar infrastructure

☐

I do not feel I understand enough about the need to install ground-mounted solar infrastructure

☐

I do not agree there is a need to install ground-mounted solar infrastructure

Project specific feedback

3.) Based on our early-stage proposals, what are your views on Great North Road Solar Park?

☐

I support the proposals

☐

I would like changes to be made to be able to support the proposals

☐

I do not support the proposals

☐

I have no opinion

4.) Which aspects of the project are most important to you?

The Great North Road Solar Park project team are considering all of the following topics carefully as we develop the proposals. Environmental assessments are already underway to determine any potential impacts and how we can mitigate them.

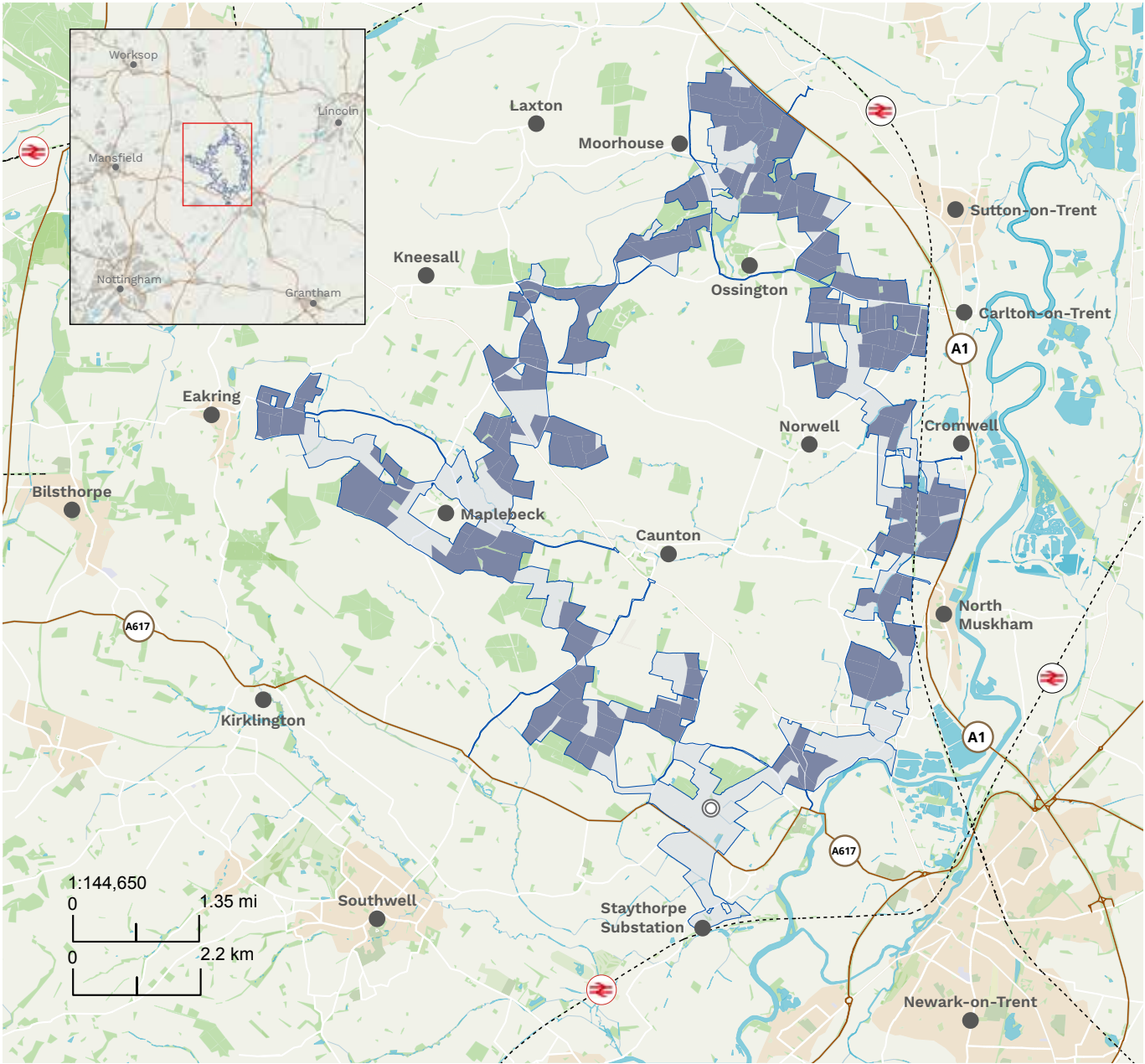
In the following table, please tick the topic areas you consider to be the most important issues that you would like us to consider. You can refer to these topic areas when responding to Question 5.

Tick box	Topic area
<input type="checkbox"/>	Local ecology and biodiversity This includes protecting existing wildlife and exploring opportunities to improve ecology and biodiversity across the site area.
<input type="checkbox"/>	Landscape and visual This includes any visual impacts and how we can screen the solar farm from particular local viewpoints.
<input type="checkbox"/>	Archaeology and local heritage This includes ways that our proposals may interact with local heritage sites and the sharing of any archaeological findings.
<input type="checkbox"/>	Traffic and access This includes the managing of vehicles and deliveries associated with the solar farm.
<input type="checkbox"/>	Land use and agriculture This includes how we can best manage the land during the operation of the solar farm, including opportunities for continued agricultural use.
<input type="checkbox"/>	Hydrology and flood risk This includes considering the interaction with watercourses and rainfall in the area.
<input type="checkbox"/>	Recreation and amenity This includes maintaining existing Public Rights of Way and exploring opportunities to deliver new routes and amenities across the site area.
<input type="checkbox"/>	Noise and safety This includes any areas you think may need additional mitigation and screening.
<input type="checkbox"/>	Socio-economics and tourism This includes opportunities to involve local businesses and people in the construction and operation of GNR Solar Park, supply chain, and education opportunities.
<input type="checkbox"/>	Climate change and energy need For example, the need for large-scale solar projects and the carbon footprint of the project.
<input type="checkbox"/>	Other (please detail) Please list any other topics that you would like our team to consider: <div></div>






5.) Please provide comments on our early-stage proposals for Great North Road Solar Park.

You may choose to expand upon your answers to Question 3 (your overall view of Great North Road Solar Park) and Question 4 (the topic areas you think are most important for our team to consider). Please feel free to include additional sheets of paper alongside this form, if you require more space to fully complete your answer. All feedback received will be considered.

If you are providing location specific feedback, please try to include as much detail as possible to help our team identify this. In addition, if you would like to annotate a separate map of the site, please enclose this here.



Key

- | | | |
|--|---|---|
|  Proposed solar areas |  Cable, access and potential enhancement areas |  Battery Energy Storage System |
|  Railway |  Road | |

6.) What types of community initiatives would you like us to explore as part of our proposals?

Subject to consent being granted, Great North Road Solar Park would offer a community benefit package – known as NG+ which has the potential to make available around £1 million per annum to support local causes. We are committed to working with local communities to identify and define community benefits. For more information about NG+, please visit our dedicated NG+ website at <https://ngplus.uk/>

We are keen to hear your suggestions on local schemes and projects we could support or deliver to benefit those communities closest to the project. Please detail any community initiatives you would like the project team to consider.

Our consultation process

7.) How did you find out about this consultation?

☐ I received a postcard

☐ I saw it advertised in the media

☐ I saw a poster

☐ Via a local community group

☐ Word of mouth

☐ Other (please specify)

8.) Have you attended one of our exhibition events?

☐ Yes

☐ No (you can find out about our consultation events at www.gnrsolarpark.co.uk)

9.) Do you prefer to receive information online or in-person?

☐ Online

☐ In-person

☐ A combination of both

10.) How informative have you found the materials we have shared as part of this first phase of consultation?

☐ Very informative

☐ Quite informative

☐ Not informative

☐ No opinion

11.) Is there anything you would like us to consider for future consultations?

Get in touch

To return your completed feedback form, place this feedback form in an envelope and address it to: FREEPOST GNR SOLAR. You will not need a stamp.

Alternatively, you can answer the same questions in our online feedback form, available on the website: www.gnrsolarpark.co.uk

Thank you for taking the time to complete this form and providing us with your feedback.

We will acknowledge and record all the comments submitted to us during consultation, taking them into consideration to help inform our decisions as we evolve and finalise our proposals.

Further to developing more detailed proposals for the project, we will then carry out a second stage of consultation. This is a statutory stage of consultation required by the application process for Nationally Significant Infrastructure Projects (NSIPs).

This statutory stage of consultation is intended to give you the opportunity to comment on our updated proposals and how they have evolved since the initial consultation.

You can contact our team by:



Visit: www.GNRsolarpark.co.uk



Call: Freephone 0808 175 4054



Email: info@gnrsolarpark.co.uk



Write: Freepost GNR Solar

5 PHASE ONE CONSULTATION EXHIBITION MATERIALS

Introduction

Elements Green is developing proposals for a new solar and energy storage park located to the northwest of Newark-on-Trent, Nottinghamshire.

Great North Road (GNR) Solar Park would deliver around 800 megawatts (MW) AC / 1.12 GW (DC) of electricity.

The solar park would include 1.5 million ground mounted solar photovoltaic (PV) panels, energy storage, and related infrastructure to connect the scheme to the national grid at Staythorpe substation.

The project boundary comprises approximately 2,900 hectares of agricultural land located to the northwest of Newark. The solar PV area of the development is currently 1,600 hectares with the remaining area designated for enhancement, cables and access.

Our Stage One consultation starts on Tuesday 16th January 2024. It will run for six weeks, closing on Tuesday 27th February 2024.

Further to developing more detailed proposals for the project, we will then carry out a second stage of consultation. This will be a statutory stage of consultation which is intended to give you the opportunity to comment on our updated proposals and how they have evolved since the initial consultation. Stage Two consultation is expected to take place later this year.

Who we are

The proposals for Great North Road Solar Park are being developed by Elements Green, who has a proven track record in renewable energy development, with 7 gigawatts (GW) of renewable energy development projects globally.

We are committed to powering the world's future energy needs. Using our deep understanding of the renewables sector, we are delivering innovative and sustainable solutions for global energy security and the needs of a rapidly evolving world.



Enough clean energy to power around **400,000 UK homes**, which is equivalent to all homes in Nottinghamshire.



Great North Road Solar Park

Great North Road (GNR) Solar Park would comprise the installation of solar photovoltaic (PV) panels, an on-site energy storage facility and the infrastructure needed to connect the scheme into the national grid.

The location

The project is proposed to be located on approximately 2,900 hectares (7,166 acres) of land to the northwest of Newark, Nottinghamshire. A key factor influencing the location of GNR Solar Park is the availability of a connection at National Grid's Staythorpe substation. The closure of fossil fuel power stations has created capacity on the grid. The site location was further refined through a range of planning and environmental factors, such as the existing land use, quality of land, and technical constraints.

Why here?

The project boundaries are naturally shaped by the River Trent to the east, Sherwood Forest to the west, the historic landscape of Laxton to the north, and the protected views of Southwell to the south. High flood risk zones, protected ecological and landscape sites, high grade agricultural land and adverse topography have been avoided in order to select the most suitable land for the project.

History of energy generation in the area

GNR Solar Park would continue the rich history of power generation in this area. Staythorpe housed some of National Grid's first infrastructure in 1953, and has since been central to electricity transmission all around the country, from Hull to London.

Staythorpe 'A' was a coal-fired power station that operated from 1950 until 1983. By 1962, Staythorpe 'B' became operational using coal, however after being shut down in 1994, the location became the site for the current Staythorpe substation. In 2010, gas-powered Staythorpe 'C' power station became the second largest Combined Cycle Gas Turbine (CCGT) in the UK, providing energy to two million homes.

As the coal-fired power stations in this area have closed down, this has created capacity in the grid, allowing GNR Solar Park to carry on the tradition of power generation in the area using a clean, renewable resource.



The components of a solar farm

The development we are proposing would comprise the installation of solar photovoltaic (PV) panels and an on-site energy storage facility. The energy storage system would deliver significant efficiency, whereby electricity generated by the solar PV panels could be stored in batteries at times when demand for electricity is low, and then released on to the grid at times of higher demand.

This serves to improve reliability, efficiency, and cost-effectiveness of electricity supply by providing an important balancing service for the national grid.

The principle components of the scheme we are proposing are shown in the diagram below.

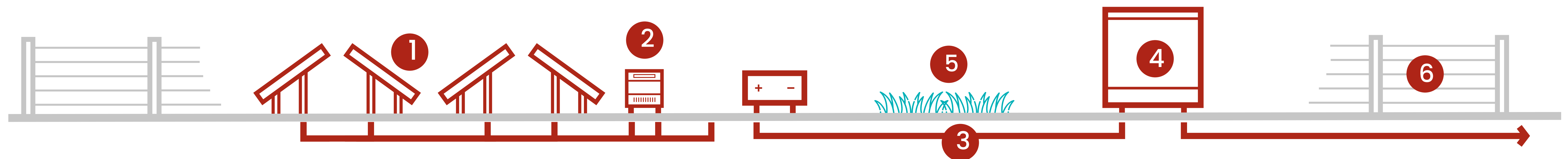
Solar array
1.Solar panels

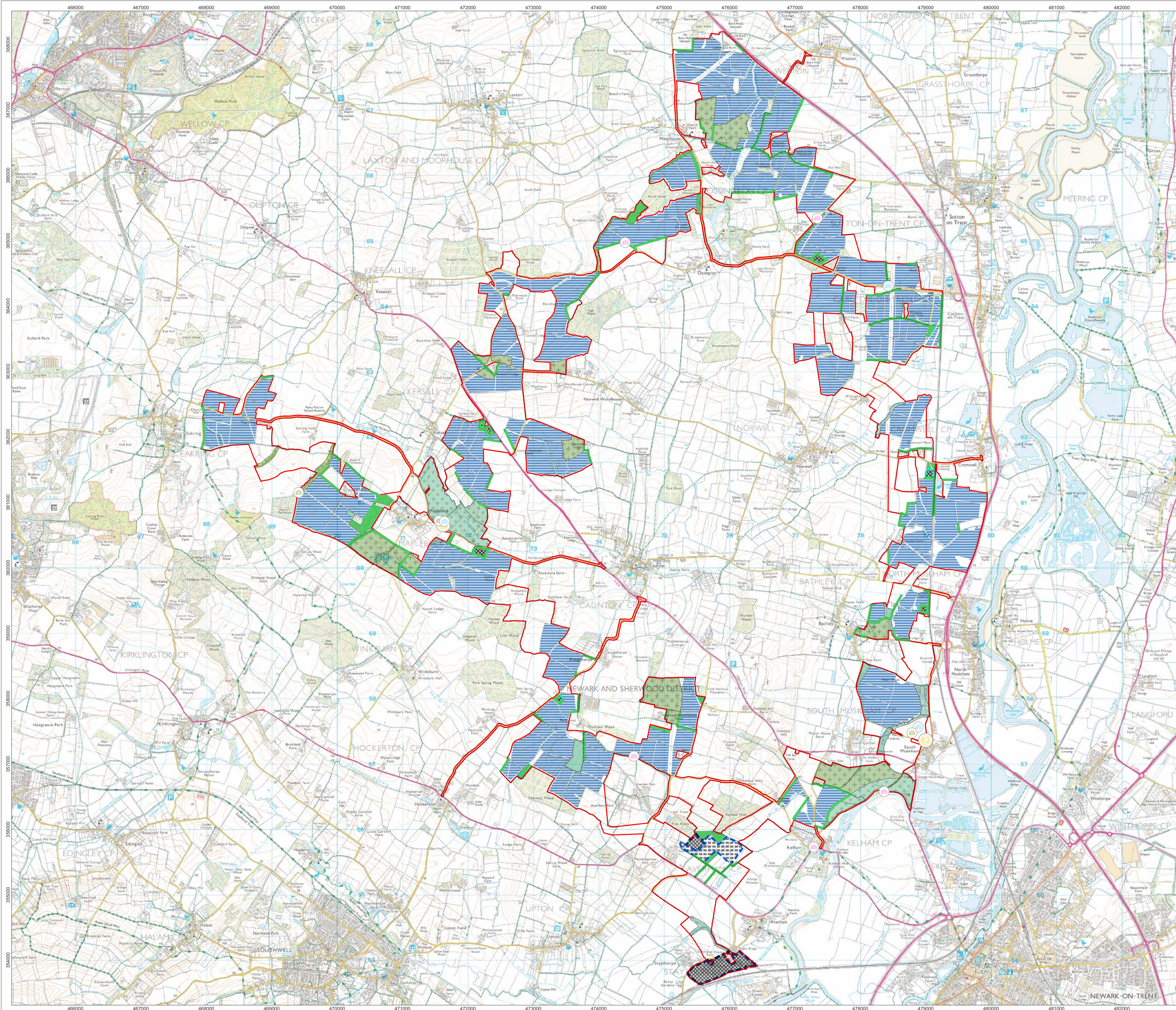
Electrical connection infrastructure
2.Inverter
3.Underground cable
4.Substation

Mitigation and enhancement measures
5.Landscape area

Ancillary works
6.Fencing

Solar technology is rapidly evolving; therefore, our application will include flexibility to allow us to use the latest technology available at the time of construction.



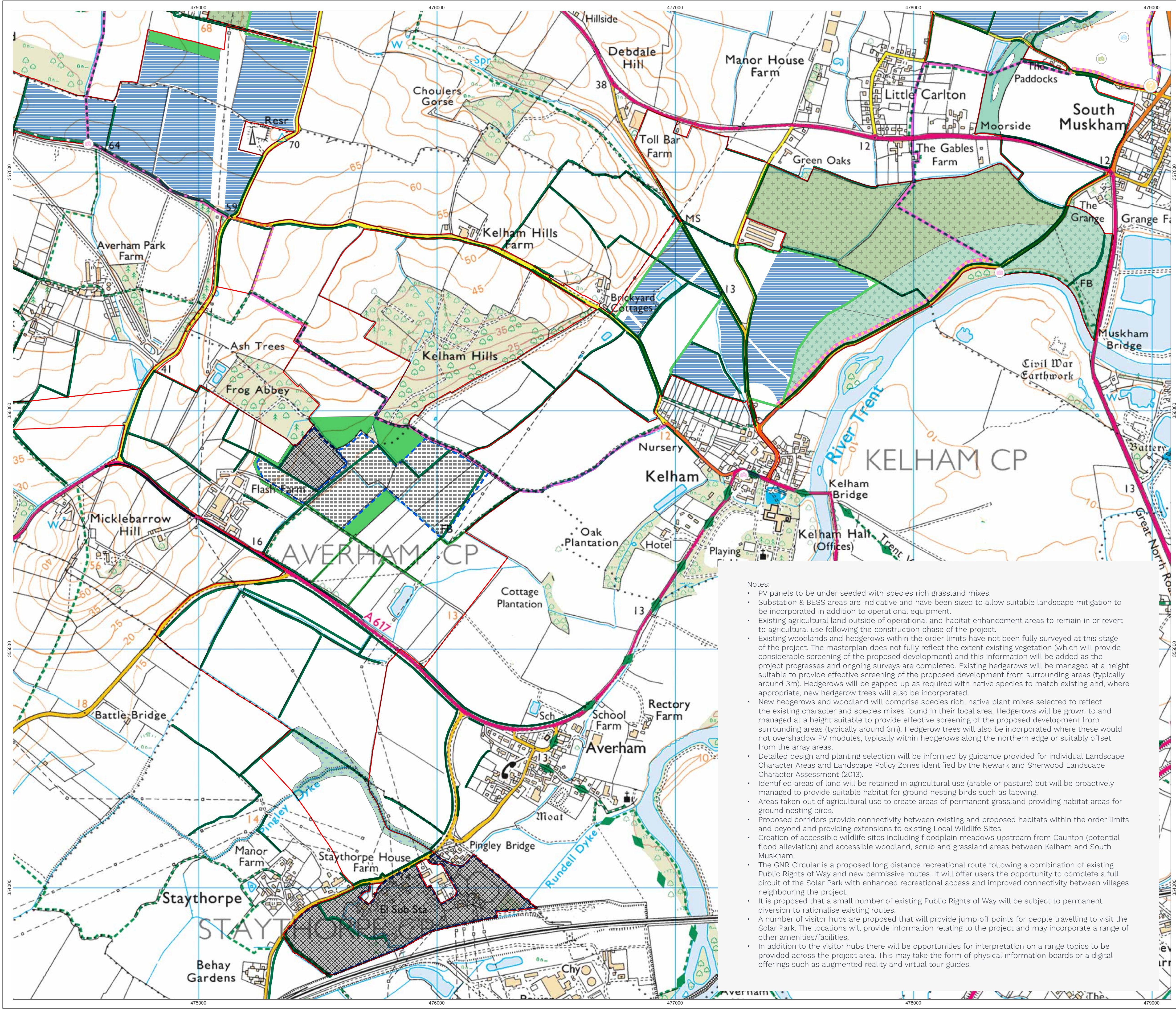


- Order Limits
- Proposed Solar Panel Areas (1) - typically offset approximately 10m from field boundaries
- Proposed 400kV Substation Areas (2)
- Proposed BESS Area (2)
- Proposed Substation Areas (2)
- Landscape & Ecology**
- Proposed Hedgerows and Broadleaf Woodland (5) (6)
- Retained Agricultural Land - enhanced ecological management (7)
- Proposed Permanent Grassland (8)
- Proposed Green Corridor (9)
- Proposed Riparian Corridor (9)
- Proposed Wildlife Site (10)
- Visitor Interpretation**
- Clean Energy Information (14)
- Ecology/Landscape Information (14)
- Heritage Information (14)
- Solar Farm Visitor Hub (13)

1:27,500 Scale @ A1	
Produced By:	Ref:
Checked By:	Date: 16/01/2024

Preliminary Masterplan

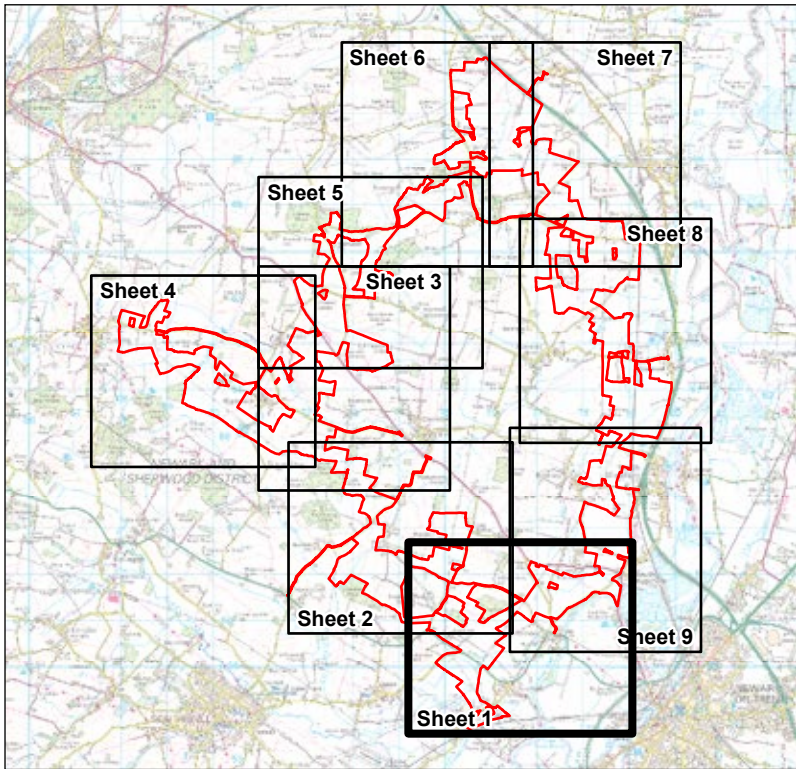
Great North Road Solar Park



- Notes:
- PV panels to be under seeded with species rich grassland mixes.
 - Substation & BESS areas are indicative and have been sized to allow suitable landscape mitigation to be incorporated in addition to operational equipment.
 - Existing agricultural land outside of operational and habitat enhancement areas to remain in or revert to agricultural use following the construction phase of the project.
 - Existing woodlands and hedgerows within the order limits have not been fully surveyed at this stage of the project. The masterplan does not fully reflect the extent existing vegetation (which will provide considerable screening of the proposed development) and this information will be added as the project progresses and ongoing surveys are completed. Existing hedgerows will be managed at a height suitable to provide effective screening of the proposed development from surrounding areas (typically around 3m). Hedgerows will be gapped up as required with native species to match existing and, where appropriate, new hedgerow trees will also be incorporated.
 - New hedgerows and woodland will comprise species rich, native plant mixes selected to reflect the existing character and species mixes found in their local area. Hedgerows will be grown to and managed at a height suitable to provide effective screening of the proposed development from surrounding areas (typically around 3m). Hedgerow trees will also be incorporated where these would not overshadow PV modules, typically within hedgerows along the northern edge or suitably offset from the array areas.
 - Detailed design and planting selection will be informed by guidance provided for individual Landscape Character Areas and Landscape Policy Zones identified by the Newark and Sherwood Landscape Character Assessment (2013).
 - Identified areas of land will be retained in agricultural use (arable or pasture) but will be proactively managed to provide suitable habitat for ground nesting birds such as lapwing.
 - Areas taken out of agricultural use to create areas of permanent grassland providing habitat areas for ground nesting birds.
 - Proposed corridors provide connectivity between existing and proposed habitats within the order limits and beyond and providing extensions to existing Local Wildlife Sites.
 - Creation of accessible wildlife sites including floodplain meadows upstream from Caunton (potential flood alleviation) and accessible woodland, scrub and grassland areas between Kelham and South Muskham.
 - The GNR Circular is a proposed long distance recreational route following a combination of existing Public Rights of Way and new permissive routes. It will offer users the opportunity to complete a full circuit of the Solar Park with enhanced recreational access and improved connectivity between villages neighbouring the project.
 - It is proposed that a small number of existing Public Rights of Way will be subject to permanent diversion to rationalise existing routes.
 - A number of visitor hubs are proposed that will provide jump off points for people travelling to visit the Solar Park. The locations will provide information relating to the project and may incorporate a range of other amenities/facilities.
 - In addition to the visitor hubs there will be opportunities for interpretation on a range topics to be provided across the project area. This may take the form of physical information boards or a digital offerings such as augmented reality and virtual tour guides.



- Order Limits
- Proposed Solar Panel Areas (1) - typically offset approximately 10m from field boundaries
- Proposed 400kV Substation Areas (2)
- Proposed BESS Area (2)
- Proposed Substation Areas (2)
- Landscape & Ecology**
- Existing Hedgerows (4) (6)
- Proposed Hedgerows and Broadleaf Woodland (5) (6)
- Retained Agricultural Land - enhanced ecological management (7)
- Proposed Permanent Grassland (8)
- Proposed Green Corridor (9)
- Proposed Riparian Corridor (9)
- Proposed Wildlife Site (10)
- Access, Recreation & Interpretation**
- Proposed GNR Circular Long Distance Route (11)
- Proposed New Permissive Route (11)
- Proposed Public Right of Way Diversion (12)
- Proposed Public Right of Way Deletion (12)
- Solar Farm Visitor Hub (13)
- Clean Energy Information (14)
- Ecology/Landscape Information (14)
- Heritage Information (14)

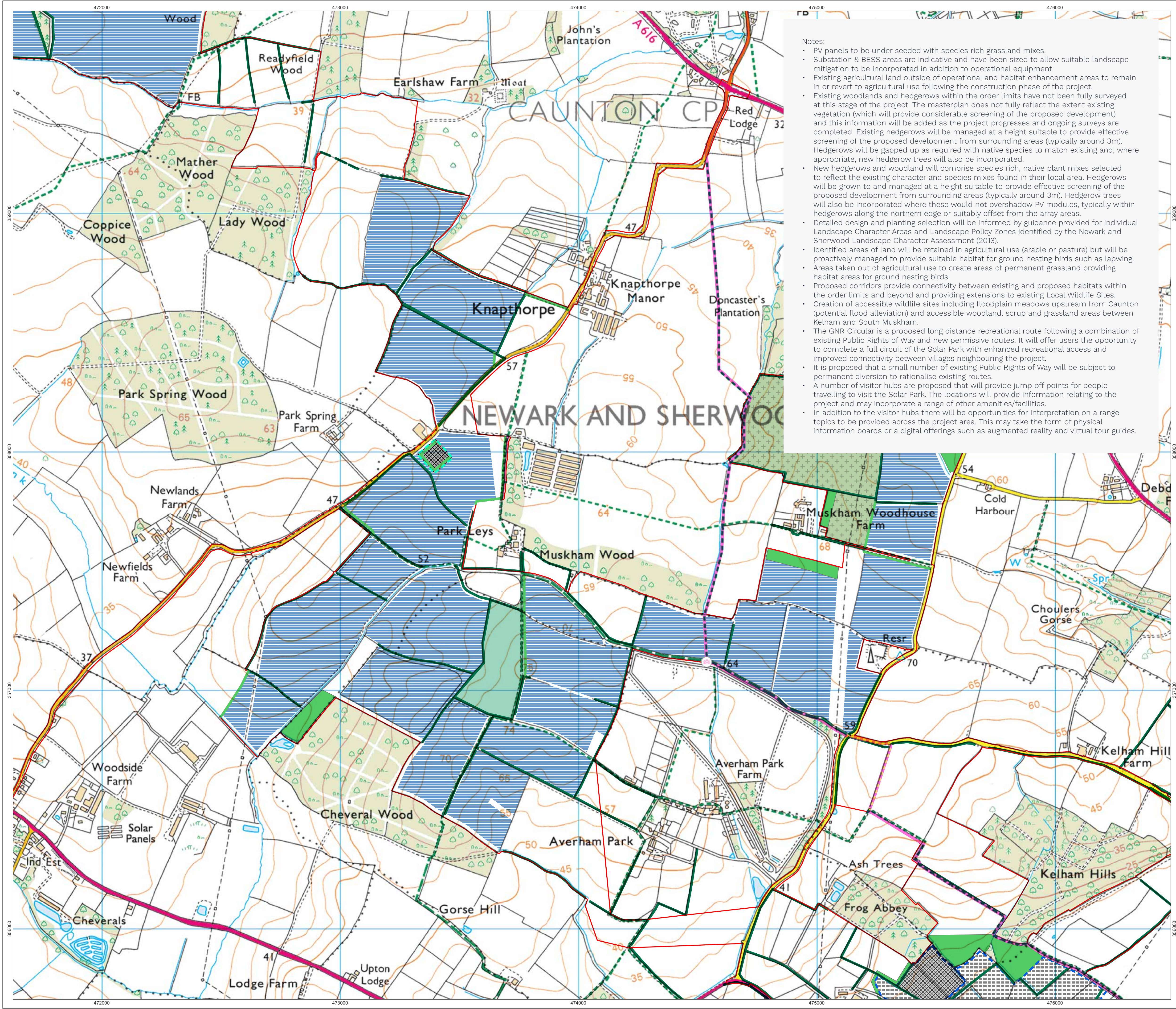


1:7,500 Scale @ A1
0 0.25 0.5 km

Produced By:	Ref:
Checked By:	Date: 15/01/2024

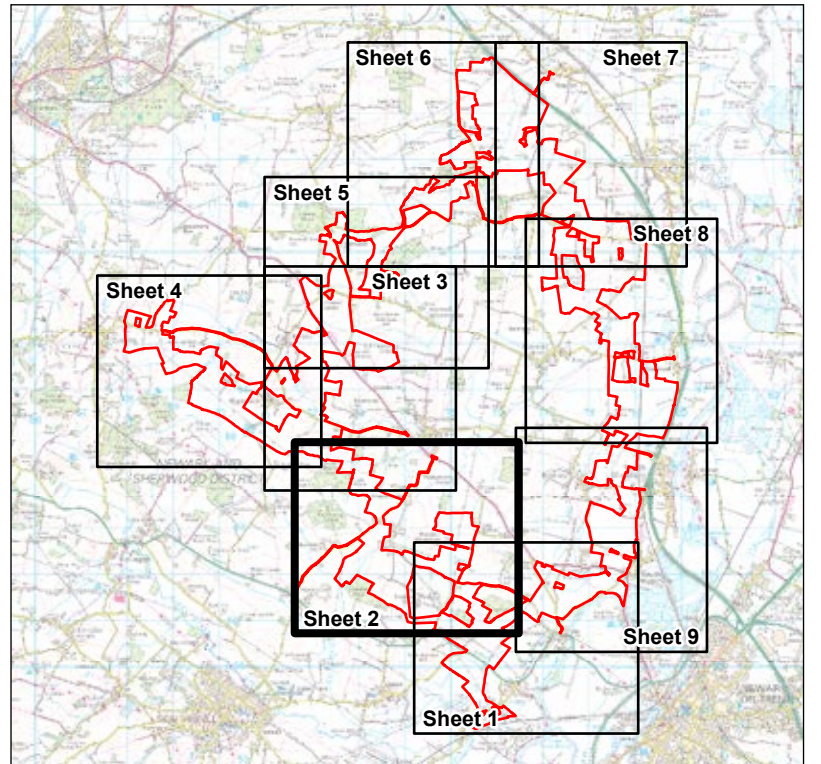
Preliminary Masterplan Detail Sheet 1

Great North Road Solar Park



- Notes:
- PV panels to be under seeded with species rich grassland mixes.
 - Substation & BESS areas are indicative and have been sized to allow suitable landscape mitigation to be incorporated in addition to operational equipment.
 - Existing agricultural land outside of operational and habitat enhancement areas to remain in or revert to agricultural use following the construction phase of the project.
 - Existing woodlands and hedgerows within the order limits have not been fully surveyed at this stage of the project. The masterplan does not fully reflect the extent existing vegetation (which will provide considerable screening of the proposed development) and this information will be added as the project progresses and ongoing surveys are completed. Existing hedgerows will be managed at a height suitable to provide effective screening of the proposed development from surrounding areas (typically around 3m). Hedgerows will be gapped up as required with native species to match existing and, where appropriate, new hedgerow trees will also be incorporated.
 - New hedgerows and woodland will comprise species rich, native plant mixes selected to reflect the existing character and species mixes found in their local area. Hedgerows will be grown to and managed at a height suitable to provide effective screening of the proposed development from surrounding areas (typically around 3m). Hedgerow trees will also be incorporated where these would not overshadow PV modules, typically within hedgerows along the northern edge or suitably offset from the array areas.
 - Detailed design and planting selection will be informed by guidance provided for individual Landscape Character Areas and Landscape Policy Zones identified by the Newark and Sherwood Landscape Character Assessment (2013).
 - Identified areas of land will be retained in agricultural use (arable or pasture) but will be proactively managed to provide suitable habitat for ground nesting birds such as lapwing.
 - Areas taken out of agricultural use to create areas of permanent grassland providing habitat areas for ground nesting birds.
 - Proposed corridors provide connectivity between existing and proposed habitats within the order limits and beyond and providing extensions to existing Local Wildlife Sites.
 - Creation of accessible wildlife sites including floodplain meadows upstream from Cauntton (potential flood alleviation) and accessible woodland, scrub and grassland areas between Kelham and South Muskham.
 - The GNR Circular is a proposed long distance recreational route following a combination of existing Public Rights of Way and new permissive routes. It will offer users the opportunity to complete a full circuit of the Solar Park with enhanced recreational access and improved connectivity between villages neighbouring the project.
 - It is proposed that a small number of existing Public Rights of Way will be subject to permanent diversion to rationalise existing routes.
 - A number of visitor hubs are proposed that will provide jump off points for people travelling to visit the Solar Park. The locations will provide information relating to the project and may incorporate a range of other amenities/facilities.
 - In addition to the visitor hubs there will be opportunities for interpretation on a range topics to be provided across the project area. This may take the form of physical information boards or a digital offerings such as augmented reality and virtual tour guides.

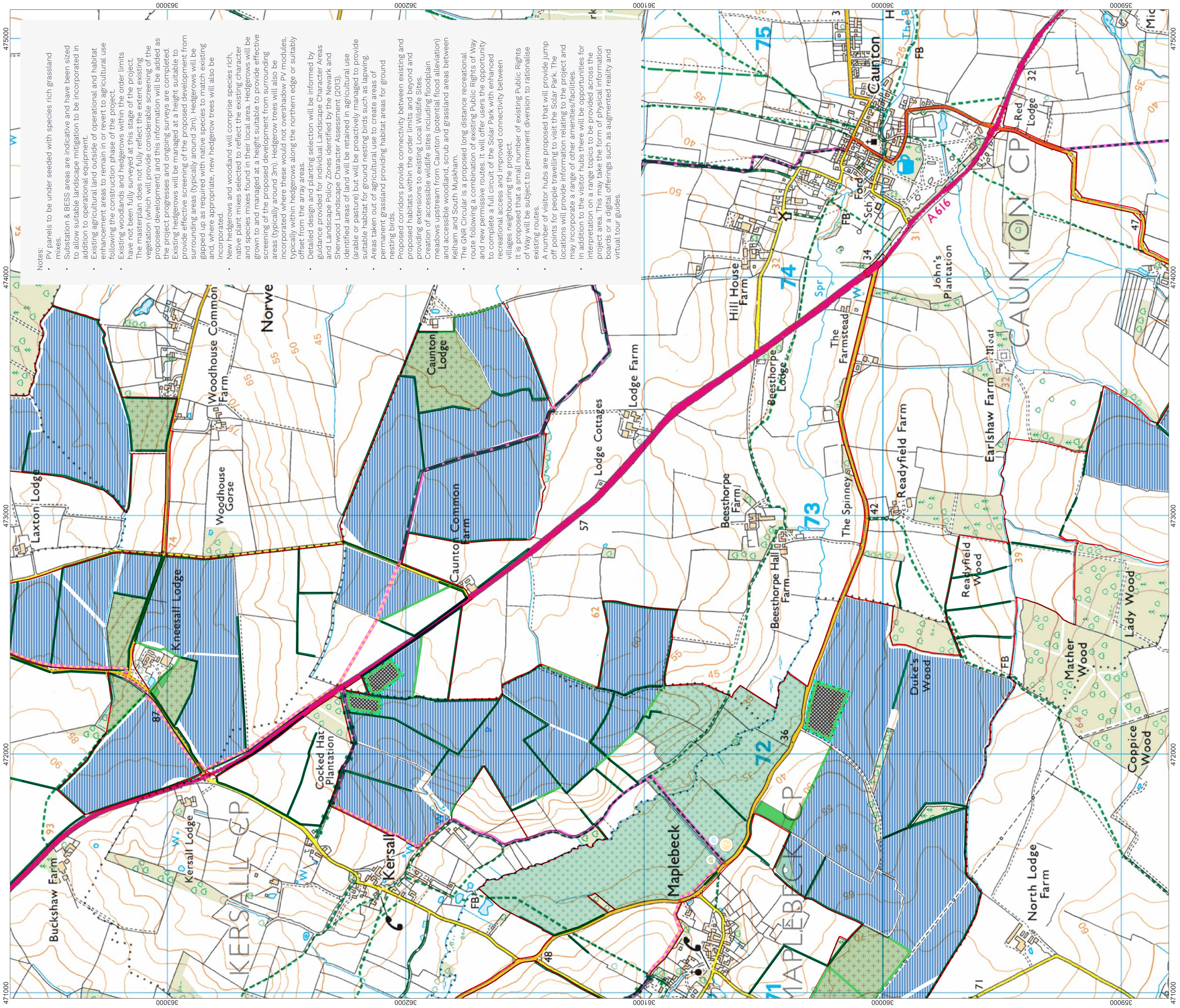
- 
- Order Limits**
- Proposed Solar Panel Areas (1) - typically offset approximately 10m from field boundaries
 - Proposed 400kV Substation Areas (2)
 - Proposed BESS Area (2)
 - Proposed Substation Areas (2)
- Landscape & Ecology**
- Existing Hedgerows (4) (6)
 - Proposed Hedgerows and Broadleaf Woodland (5) (6)
 - Retained Agricultural Land - enhanced ecological management (7)
 - Proposed Permanent Grassland (8)
 - Proposed Green Corridor (9)
 - Proposed Riparian Corridor (9)
 - Proposed Wildlife Site (10)
- Access, Recreation & Interpretation**
- Proposed GNR Circular Long Distance Route (11)
 - Proposed New Permissive Route (11)
 - Proposed Public Right of Way Diversion (12)
 - Proposed Public Right of Way Deletion (12)
 - Solar Farm Visitor Hub (13)
 - Clean Energy Information (14)
 - Ecology/Landscape Information (14)
 - Heritage Information (14)



1:7,500	Scale @ A1	
0	0.25	0.5 km
Produced By:	Ref:	
Checked By:	Date: 15/01/2024	

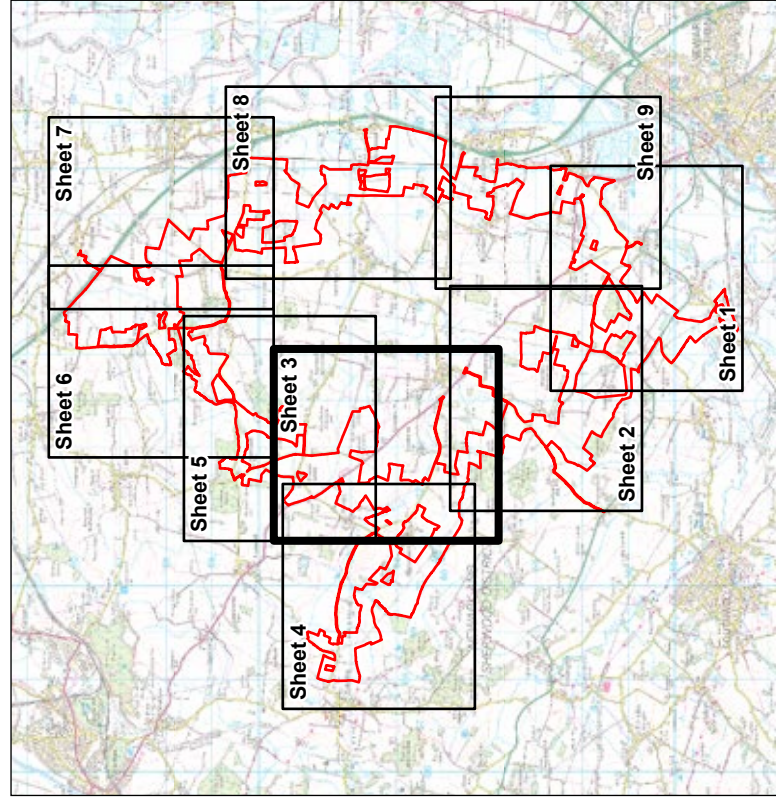
**Preliminary Masterplan
Detail Sheet 2**

Great North Road Solar Park



- Notes:
- PV panels to be under seeded with species rich grassland mixes.
 - Substation & BESS areas are indicative and have been sized to allow suitable landscape mitigation to be incorporated in addition to operational equipment.
 - Existing agricultural land outside of operational and habitat enhancement areas to remain in or revert to agricultural use following the construction phase of the project.
 - Existing woodlands and hedgerows within the order limits have not been fully surveyed at this stage of the project. The masterplan does not fully reflect the extent existing vegetation (which will provide considerable screening of the proposed development) and this information will be added as the project progresses and ongoing surveys are completed. Existing hedgerows will be managed at a height suitable to provide effective screening of the proposed development from surrounding areas (typically around 3m). Hedgerow trees will also be gapped up as required with native species to match existing and, where appropriate, new hedgerow trees will also be incorporated.
 - New hedgerows and woodland will comprise species rich, native plant mixes selected to reflect the existing character and species mixes found in their local area. Hedgerows will be grown to and managed at a height suitable to provide effective screening of the proposed development from surrounding areas (typically around 3m). Hedgerow trees will also be incorporated where these would not overshadow PV modules, typically within hedgerows along the northern edge or suitably offset from the array areas.
 - Detailed design and planting selection will be informed by guidance provided for individual Landscape Character Areas and Landscape Policy Zones identified by the Newark and Sherwood Landscape Character Assessment (2013).
 - Identified areas of land will be retained in agricultural use (arable or pasture) but will be proactively managed to provide suitable habitat for ground nesting birds such as lapwing.
 - Areas taken out of agricultural use to create areas of permanent grassland providing habitat areas for ground nesting birds.
 - Proposed corridors provide connectivity between existing and proposed habitats within the order limits and beyond and providing extensions to existing Local Wildlife Sites.
 - Creation of accessible wildlife sites including floodplain meadows upstream from Cauntton (potential flood alleviation) and accessible woodland, scrub and grassland areas between Kelham and South Muskham.
 - The GNR Circular is a proposed long distance recreational route following a combination of existing Public Rights of Way and new permissive routes. It will offer users the opportunity to complete a full circuit of the Solar Park with enhanced recreational access and improved connectivity between villages neighbouring the project.
 - It is proposed that a small number of existing Public Rights of Way will be subject to permanent diversion to rationalise existing routes.
 - A number of visitor hubs are proposed that will provide jump off points for people travelling to visit the Solar Park. The locations will provide information relating to the project and may incorporate a range of other amenities/facilities. In addition to the visitor hubs there will be opportunities for interpretation on a range topics to be provided across the project area. This may take the form of physical information boards or a digital offerings such as augmented reality and virtual tour guides.

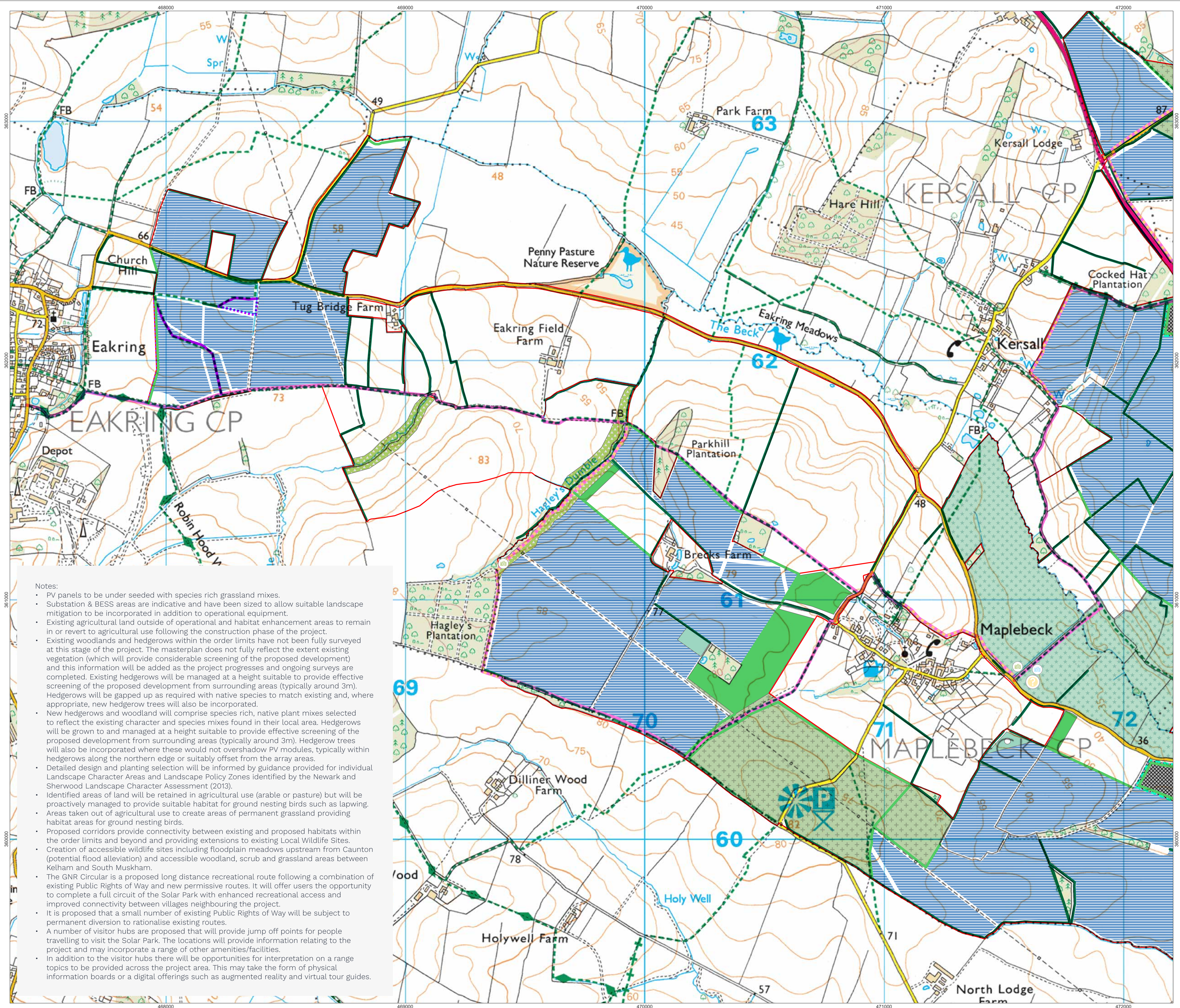
- Order Limits
- Proposed Solar Panel Areas (1) - typically offset approximately 10m from field boundaries
- Proposed 400kV Substation Areas (2)
- Proposed BESS Area (2)
- Proposed Substation Areas (2)
- Landscape & Ecology**
- Existing Hedgerows (4) (6)
- Proposed Hedgerows and Broadleaved Woodland (5) (6) (7)
- Retained Agricultural Land - enhanced ecological management
- Proposed Permanent Grassland (8)
- Proposed Green Corridor (9)
- Proposed Riparian Corridor (9)
- Proposed Wildlife Site (10)
- Access, Recreation & Interpretation**
- Proposed GNR Circular Long Distance Route (11)
- Proposed New Permissive Route (11)
- Proposed Public Right of Way Diversion (12)
- Proposed Public Right of Way Deletion (12)
- Solar Farm Visitor Hub (13)
- Clean Energy Information (14)
- Ecology/Landscape Information (14)
- Heritage Information (14)



Produced By:	Ref:
Checked By:	Date: 15/01/2024

Preliminary Masterplan
Detail Sheet 3

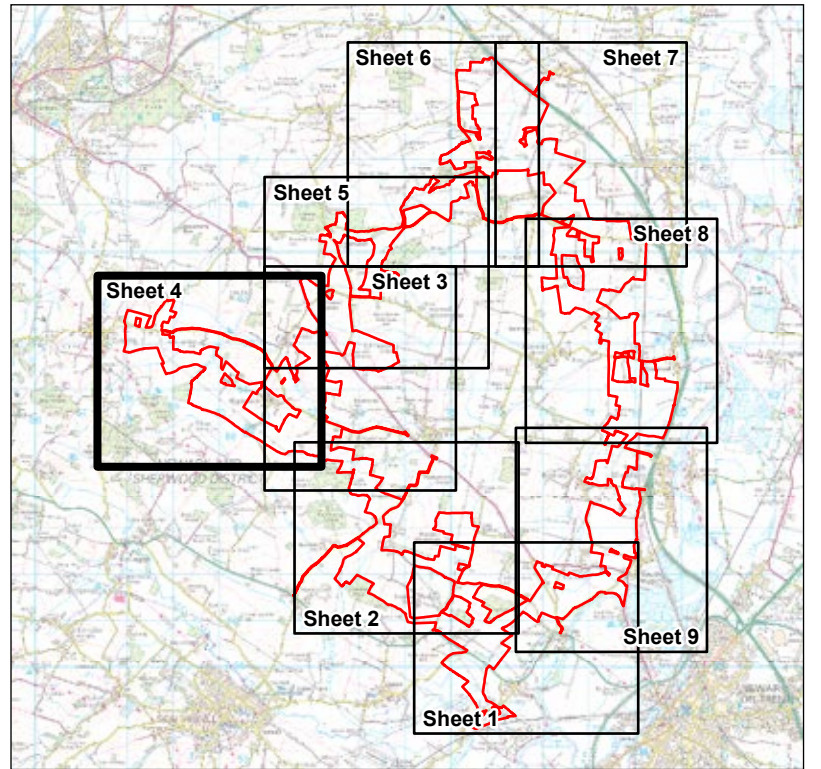




- Notes:
- PV panels to be under seeded with species rich grassland mixes.
 - Substation & BESS areas are indicative and have been sized to allow suitable landscape mitigation to be incorporated in addition to operational equipment.
 - Existing agricultural land outside of operational and habitat enhancement areas to remain in or revert to agricultural use following the construction phase of the project.
 - Existing woodlands and hedgerows within the order limits have not been fully surveyed at this stage of the project. The masterplan does not fully reflect the extent existing vegetation (which will provide considerable screening of the proposed development) and this information will be added as the project progresses and ongoing surveys are completed. Existing hedgerows will be managed at a height suitable to provide effective screening of the proposed development from surrounding areas (typically around 3m). Hedgerows will be gapped up as required with native species to match existing and, where appropriate, new hedgerow trees will also be incorporated.
 - New hedgerows and woodland will comprise species rich, native plant mixes selected to reflect the existing character and species mixes found in their local area. Hedgerows will be grown to and managed at a height suitable to provide effective screening of the proposed development from surrounding areas (typically around 3m). Hedgerow trees will also be incorporated where these would not overshadow PV modules, typically within hedgerows along the northern edge or suitably offset from the array areas.
 - Detailed design and planting selection will be informed by guidance provided for individual Landscape Character Areas and Landscape Policy Zones identified by the Newark and Sherwood Landscape Character Assessment (2013).
 - Identified areas of land will be retained in agricultural use (arable or pasture) but will be proactively managed to provide suitable habitat for ground nesting birds such as lapwing.
 - Areas taken out of agricultural use to create areas of permanent grassland providing habitat areas for ground nesting birds.
 - Proposed corridors provide connectivity between existing and proposed habitats within the order limits and beyond and providing extensions to existing Local Wildlife Sites.
 - Creation of accessible wildlife sites including floodplain meadows upstream from Caunton (potential flood alleviation) and accessible woodland, scrub and grassland areas between Kelham and South Muskham.
 - The GNR Circular is a proposed long distance recreational route following a combination of existing Public Rights of Way and new permissive routes. It will offer users the opportunity to complete a full circuit of the Solar Park with enhanced recreational access and improved connectivity between villages neighbouring the project.
 - It is proposed that a small number of existing Public Rights of Way will be subject to permanent diversion to rationalise existing routes.
 - A number of visitor hubs are proposed that will provide jump off points for people travelling to visit the Solar Park. The locations will provide information relating to the project and may incorporate a range of other amenities/facilities.
 - In addition to the visitor hubs there will be opportunities for interpretation on a range topics to be provided across the project area. This may take the form of physical information boards or a digital offerings such as augmented reality and virtual tour guides.



- Order Limits
- Proposed Solar Panel Areas (1) - typically offset approximately 10m from field boundaries
- Proposed 400kV Substation Areas (2)
- Proposed BESS Area (2)
- Proposed Substation Areas (2)
- Landscape & Ecology**
- Existing Hedgerows (4) (6)
- Proposed Hedgerows and Broadleaf Woodland (5) (6)
- Retained Agricultural Land - enhanced ecological management (7)
- Proposed Permanent Grassland (8)
- Proposed Green Corridor (9)
- Proposed Riparian Corridor (9)
- Proposed Wildlife Site (10)
- Access, Recreation & Interpretation**
- Proposed GNR Circular Long Distance Route (11)
- Proposed New Permissive Route (11)
- Proposed Public Right of Way Diversion (12)
- Proposed Public Right of Way Deletion (12)
- Solar Farm Visitor Hub (13)
- Clean Energy Information (14)
- Ecology/Landscape Information (14)
- Heritage Information (14)



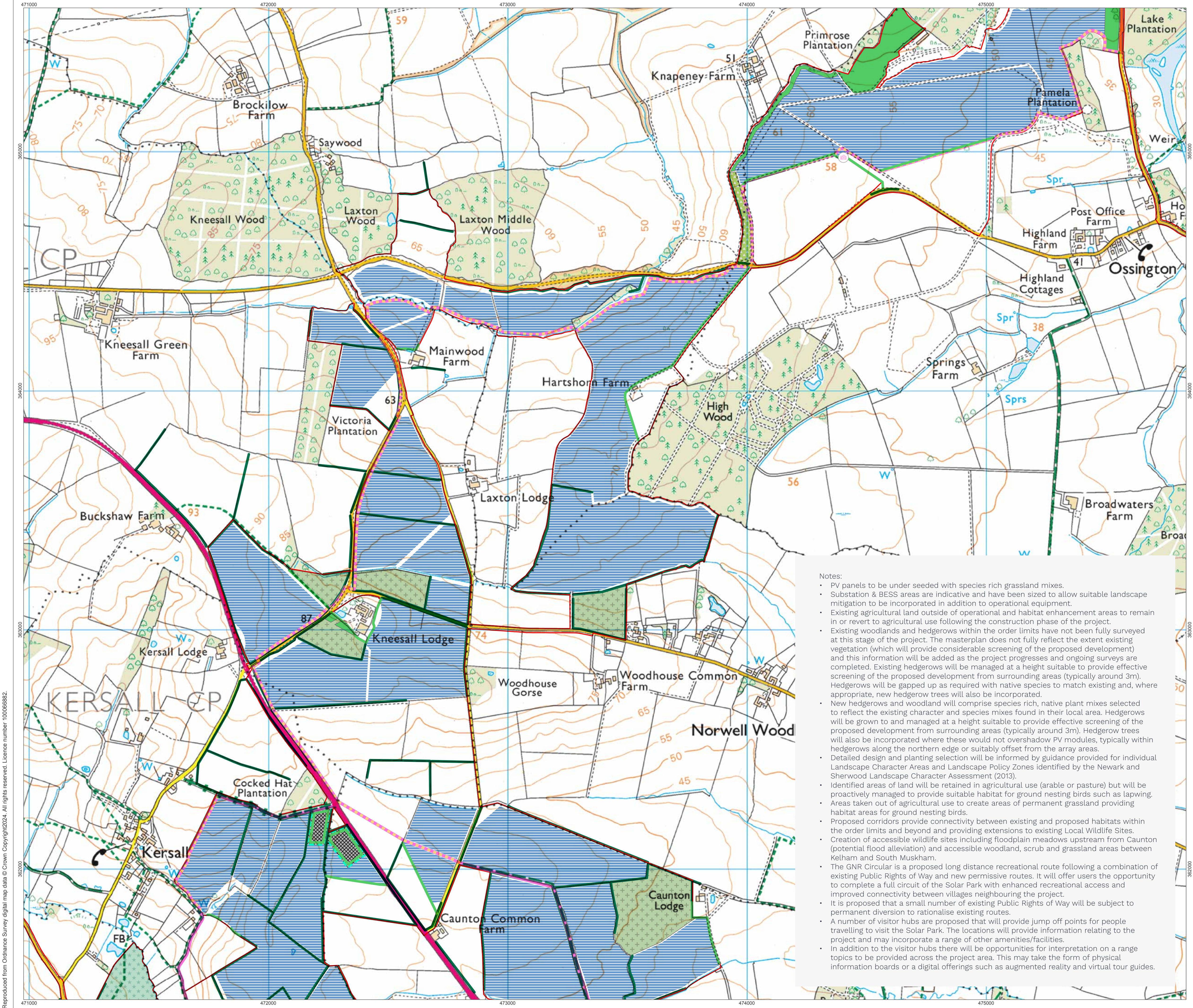
1:7,500 Scale @ A1

0 0.25 0.5 km

Produced By:	Ref:
Checked By:	Date: 15/01/2024

Preliminary Masterplan Detail Sheet 4

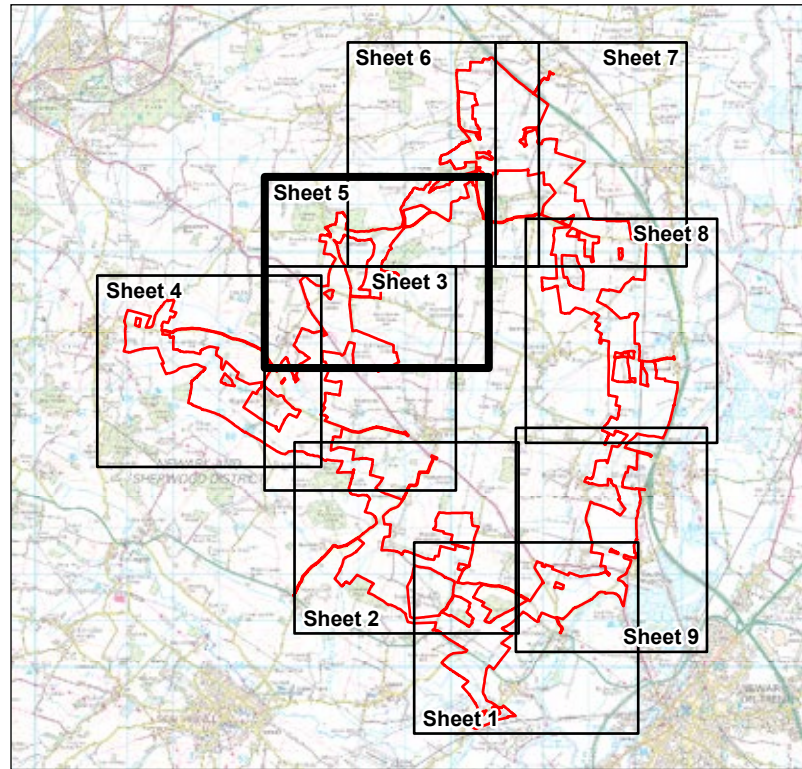
Great North Road Solar Park



- Notes:
- PV panels to be under seeded with species rich grassland mixes.
 - Substation & BESS areas are indicative and have been sized to allow suitable landscape mitigation to be incorporated in addition to operational equipment.
 - Existing agricultural land outside of operational and habitat enhancement areas to remain in or revert to agricultural use following the construction phase of the project.
 - Existing woodlands and hedgerows within the order limits have not been fully surveyed at this stage of the project. The masterplan does not fully reflect the extent existing vegetation (which will provide considerable screening of the proposed development) and this information will be added as the project progresses and ongoing surveys are completed. Existing hedgerows will be managed at a height suitable to provide effective screening of the proposed development from surrounding areas (typically around 3m). Hedgerows will be gapped up as required with native species to match existing and, where appropriate, new hedgerow trees will also be incorporated.
 - New hedgerows and woodland will comprise species rich, native plant mixes selected to reflect the existing character and species mixes found in their local area. Hedgerows will be grown to and managed at a height suitable to provide effective screening of the proposed development from surrounding areas (typically around 3m). Hedgerow trees will also be incorporated where these would not overshadow PV modules, typically within hedgerows along the northern edge or suitably offset from the array areas.
 - Detailed design and planting selection will be informed by guidance provided for individual Landscape Character Areas and Landscape Policy Zones identified by the Newark and Sherwood Landscape Character Assessment (2013).
 - Identified areas of land will be retained in agricultural use (arable or pasture) but will be proactively managed to provide suitable habitat for ground nesting birds such as lapwing.
 - Areas taken out of agricultural use to create areas of permanent grassland providing habitat areas for ground nesting birds.
 - Proposed corridors provide connectivity between existing and proposed habitats within the order limits and beyond and providing extensions to existing Local Wildlife Sites.
 - Creation of accessible wildlife sites including floodplain meadows upstream from Cauntun (potential flood alleviation) and accessible woodland, scrub and grassland areas between Kelham and South Muskham.
 - The GNR Circular is a proposed long distance recreational route following a combination of existing Public Rights of Way and new permissive routes. It will offer users the opportunity to complete a full circuit of the Solar Park with enhanced recreational access and improved connectivity between villages neighbouring the project.
 - It is proposed that a small number of existing Public Rights of Way will be subject to permanent diversion to rationalise existing routes.
 - A number of visitor hubs are proposed that will provide jump off points for people travelling to visit the Solar Park. The locations will provide information relating to the project and may incorporate a range of other amenities/facilities.
 - In addition to the visitor hubs there will be opportunities for interpretation on a range topics to be provided across the project area. This may take the form of physical information boards or a digital offerings such as augmented reality and virtual tour guides.



- Order Limits**
- Proposed Solar Panel Areas (1) - typically offset approximately 10m from field boundaries
 - Proposed 400kV Substation Areas (2)
 - Proposed BESS Area (2)
 - Proposed Substation Areas (2)
- Landscape & Ecology**
- Existing Hedgerows (4) (6)
 - Proposed Hedgerows and Broadleaf Woodland (5) (6)
 - Retained Agricultural Land - enhanced ecological management (7)
 - Proposed Permanent Grassland (8)
 - Proposed Green Corridor (9)
 - Proposed Riparian Corridor (9)
 - Proposed Wildlife Site (10)
- Access, Recreation & Interpretation**
- Proposed GNR Circular Long Distance Route (11)
 - Proposed New Permissive Route (11)
 - Proposed Public Right of Way Diversion (12)
 - Proposed Public Right of Way Deletion (12)
 - Solar Farm Visitor Hub (13)
 - Clean Energy Information (14)
 - Ecology/Landscape Information (14)
 - Heritage Information (14)

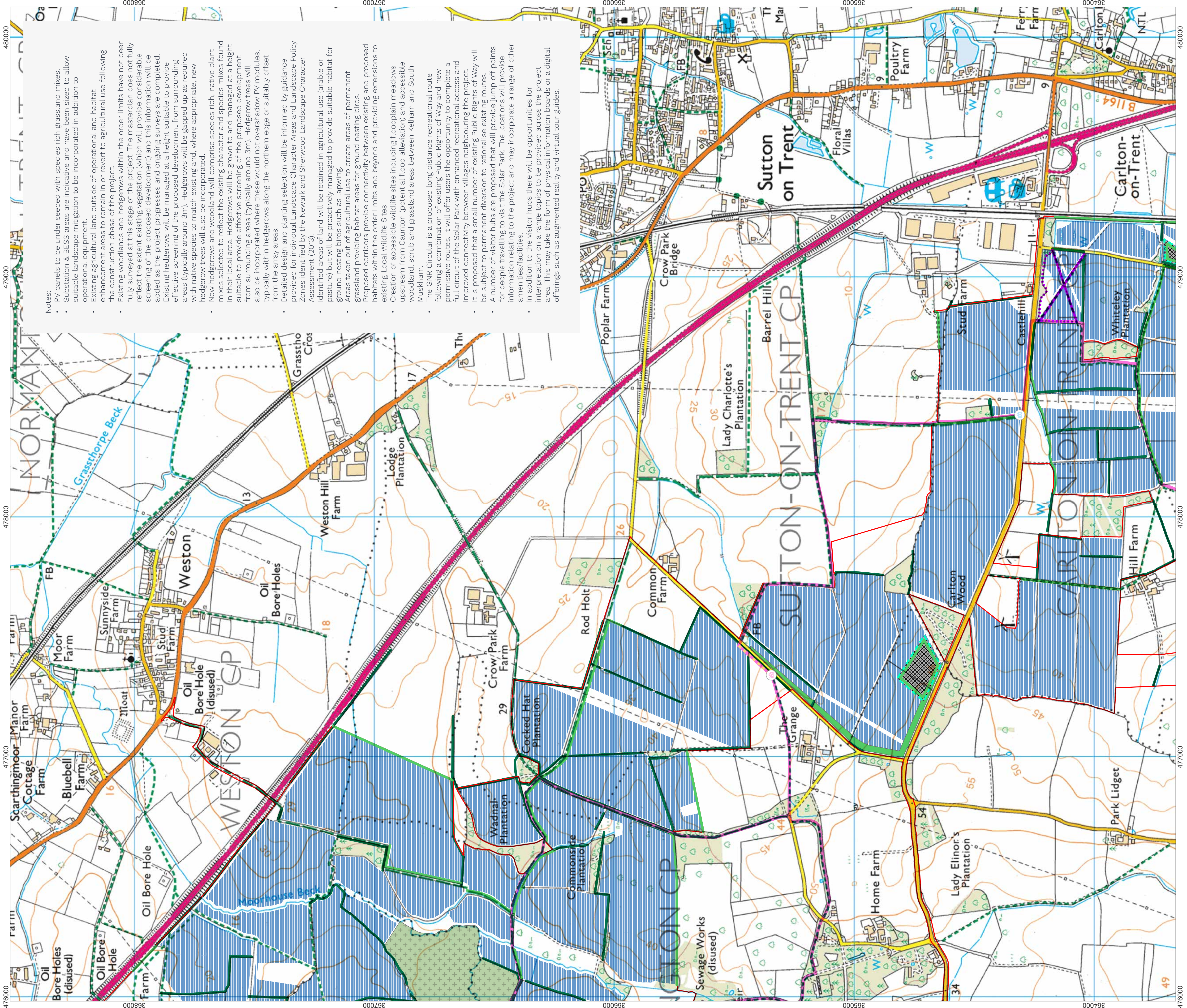


1:7,500 Scale @ A1
0 0.25 0.5 km

Produced By:	Ref:
Checked By:	Date: 15/01/2024

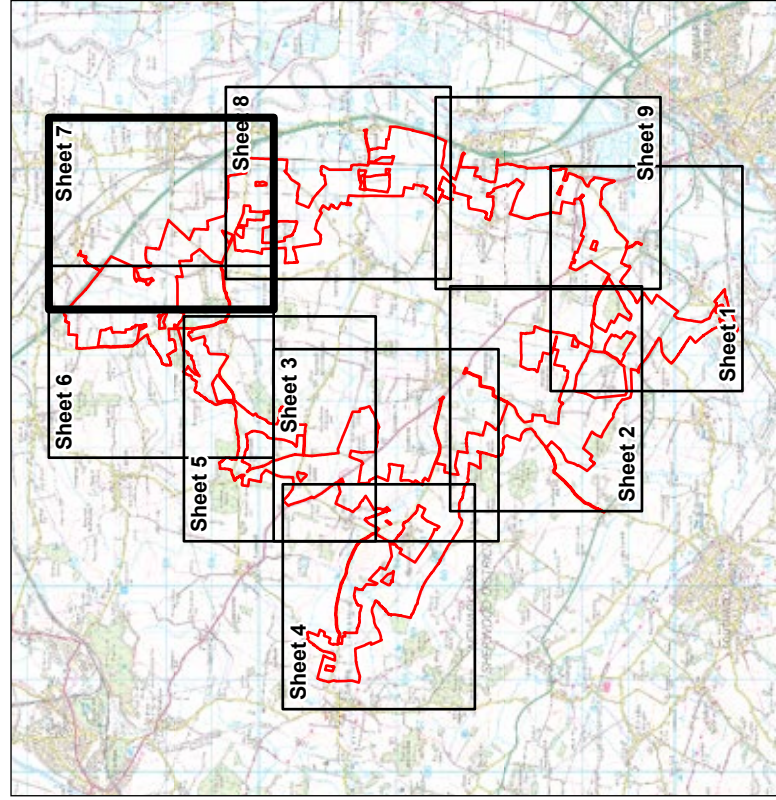
Preliminary Masterplan Detail Sheet 5

Great North Road Solar Park



- Notes:
- PV panels to be under seeded with species rich grassland mixes.
 - Substation & BESS areas are indicative and have been sized to allow suitable landscape mitigation to be incorporated in addition to operational equipment.
 - Existing agricultural land outside of operational and habitat enhancement areas to remain in or revert to agricultural use following the construction phase of the project.
 - Existing woodlands and hedgerows within the order limits have not been fully surveyed at this stage of the project. The masterplan does not fully reflect the extent existing vegetation (which will provide considerable screening of the proposed development) and this information will be added as the project progresses and ongoing surveys are completed.
 - Existing hedgerows will be managed at a height suitable to provide effective screening of the proposed development from surrounding areas (typically around 3m). Hedgerows will be gapped up as required with native species to match existing and, where appropriate, new hedgerow trees will also be incorporated.
 - New hedgerows and woodland will comprise species rich, native plant mixes selected to reflect the existing character and species mixes found in their local area. Hedgerows will be grown to and managed at a height suitable to provide effective screening of the proposed development from surrounding areas (typically around 3m). Hedgerow trees will also be incorporated where these would not overshadow PV modules, typically within hedgerows along the northern edge or suitably offset from the array areas.
 - Detailed design and planting selection will be informed by guidance provided for individual Landscape Character Areas and Landscape Policy Zones identified by the Newark and Sherwood Landscape Character Assessment (2019).
 - Identified areas of land will be retained in agricultural use (arable or pasture) but will be proactively managed to provide suitable habitat for ground nesting birds such as lapwing.
 - Areas taken out of agricultural use to create areas of permanent grassland providing habitat areas for ground nesting birds.
 - Proposed corridors provide connectivity between existing and proposed habitats within the order limits and beyond and providing extensions to existing Local Wildlife Sites.
 - Creation of accessible wildlife sites including floodplain meadows upstream from Cauntoun (potential flood alleviation) and accessible woodland, scrub and grassland areas between Kelham and South Muskham.
 - The GNR Circular is a proposed long distance recreational route following a combination of existing Public Rights of Way and new permissive routes. It will offer users the opportunity to complete a full circuit of the Solar Park with enhanced recreational access and improved connectivity between villages neighbouring the project.
 - It is proposed that a small number of existing Public Rights of Way will be subject to permanent diversion to rationalise existing routes.
 - A number of visitor hubs are proposed that will provide jump off points for people travelling to visit the Solar Park. The locations will provide information relating to the project and may incorporate a range of other amenities/facilities.
 - In addition to the visitor hubs there will be opportunities for interpretation on a range topics to be provided across the project area. This may take the form of physical information boards or a digital offerings such as augmented reality and virtual tour guides.

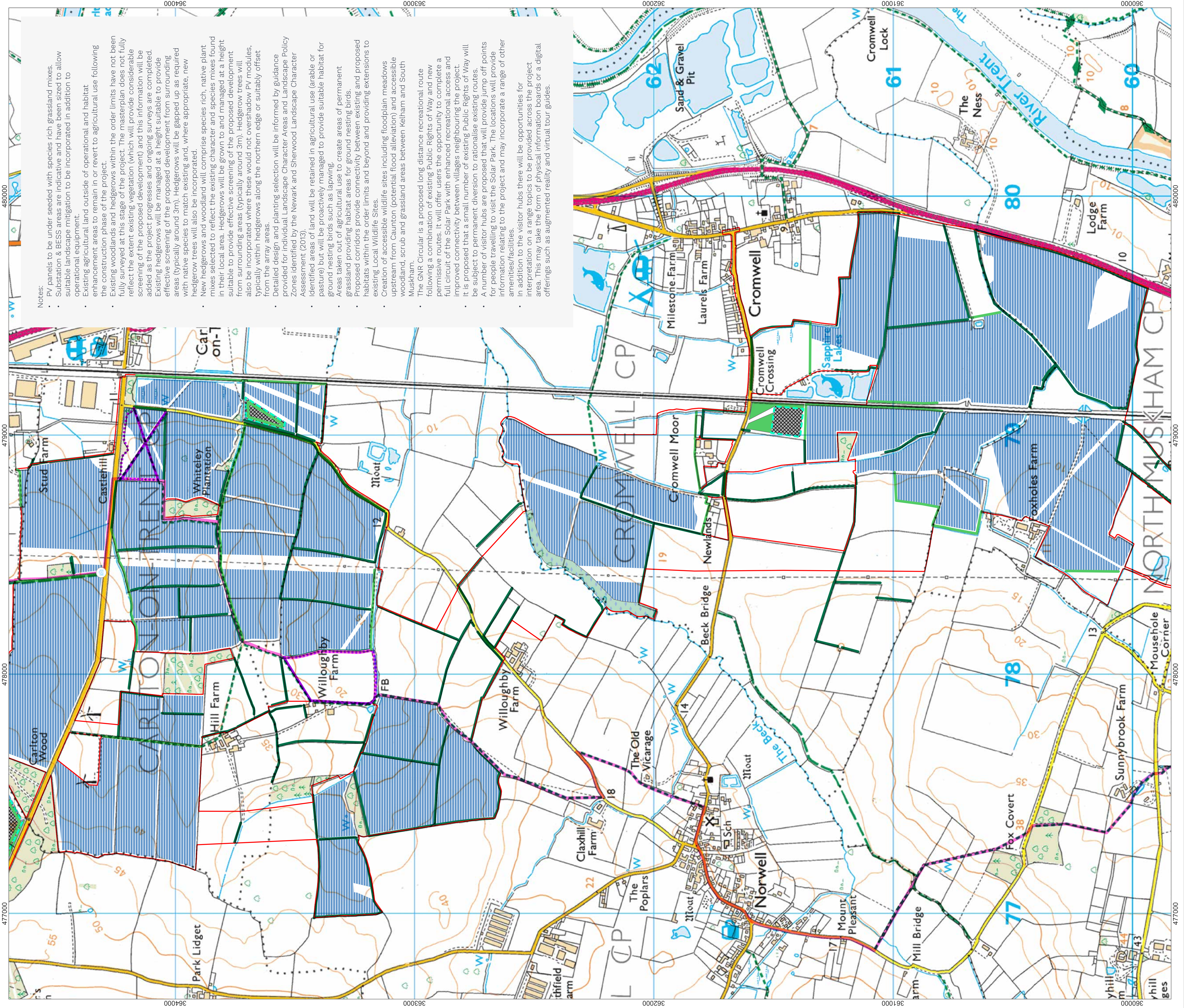
- Order Limits**
- Proposed Solar Panel Areas (1) - Typically offset approximately 10m from field boundaries
 - Proposed 400kV Substation Areas (2)
 - Proposed BESS Area (2)
 - Proposed Substation Areas (2)
- Landscape & Ecology**
- Existing Hedgerows (4) (6)
 - Proposed Hedgerows and Broadleaf Woodland (5) (6)
 - Retained Agricultural Land - enhanced ecological management (7)
 - Proposed Permanent Grassland (8)
 - Proposed Green Corridor (9)
- Access, Recreation & Interpretation**
- Proposed Riparian Corridor (9)
 - Proposed Wildlife Site (10)
 - Proposed GNR Circular Long Distance Route (11)
 - Proposed New Permissive Route (11)
 - Proposed Public Right of Way Diversion (12)
 - Proposed Public Right of Way Deletion (12)
 - Solar Farm Visitor Hub (13)
 - Clean Energy Information (14)
 - Ecology/Landscape Information (14)
 - Heritage Information (14)



Produced By:	Ref:
Checked By:	Date: 16/01/2024

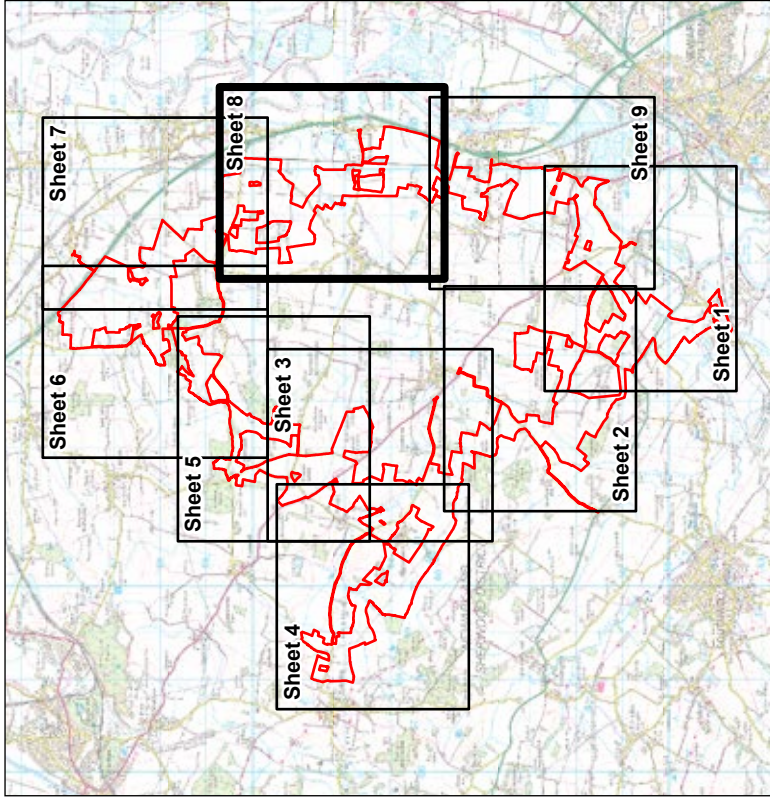
Preliminary Masterplan
Detail Sheet 7





- Notes:
- PV panels to be under seeded with species rich grassland mixes.
 - Substation & BESS areas are indicative and have been sized to allow suitable landscape mitigation to be incorporated in addition to operational equipment.
 - Existing agricultural land outside of operational and habitat enhancement areas to remain in or revert to agricultural use following the construction phase of the project.
 - Existing woodlands and hedgerows within the order limits have not been fully surveyed at this stage of the project. The masterplan does not fully reflect the extent existing vegetation (which will provide considerable screening of the proposed development) and this information will be added as the project progresses and ongoing surveys are completed.
 - Existing hedgerows will be managed at a height suitable to provide effective screening of the proposed development from surrounding areas (typically around 3m). Hedgerows will be gapped up as required with native species to match existing and, where appropriate, new hedgerow trees will also be incorporated.
 - New hedgerows and woodland will comprise species rich, native plant mixes selected to reflect the existing character and species mixes found in their local area. Hedgerows will be grown to and managed at a height suitable to provide effective screening of the proposed development from surrounding areas (typically around 3m). Hedgerow trees will also be incorporated where these would not overshadow PV modules, typically within hedgerows along the northern edge or suitably offset from the array areas.
 - Detailed design and planting selection will be informed by guidance provided for individual Landscape Character Areas and Landscape Policy Zones identified by the Newark and Sherwood Landscape Character Assessment (2013).
 - Identified areas of land will be retained in agricultural use (arable or pasture) but will be proactively managed to provide suitable habitat for ground nesting birds such as lapwing.
 - Areas taken out of agricultural use to create areas of permanent grassland providing habitat areas for ground nesting birds.
 - Proposed corridors provide connectivity between existing and proposed habitats within the order limits and beyond and providing extensions to existing Local Wildlife Sites.
 - Creation of accessible wildlife sites including floodplain meadows upstream from Cauntton (potential flood alleviation) and accessible woodland, scrub and grassland areas between Kelham and South Muskham.
 - The GNR Circular is a proposed long distance recreational route following a combination of existing Public Rights of Way and new permissive routes. It will offer users the opportunity to complete a full circuit of the Solar Park with enhanced recreational access and improved connectivity between villages neighbouring the project.
 - It is proposed that a small number of existing Public Rights of Way will be subject to permanent diversion to rationalise existing routes.
 - A number of visitor hubs are proposed that will provide jump off points for people travelling to visit the Solar Park. The locations will provide information relating to the project and may incorporate a range of other amenities/facilities.
 - In addition to the visitor hubs there will be opportunities for interpretation on a range topics to be provided across the project area. This may take the form of physical information boards or a digital offerings such as augmented reality and virtual tour guides.

- Order Limits**
- Proposed Solar Panel Areas (1) - typically offset approximately 10m from field boundaries
 - Proposed 400kV Substation Areas (2)
 - Proposed BESS Area (2)
 - Proposed Substation Areas (2)
- Landscape & Ecology**
- Existing Hedgerows (4) (6)
 - Proposed Hedgerows and Broadleaf Woodland (5) (6)
 - Retained Agricultural Land - enhanced ecological management (7)
 - Proposed Permanent Grassland (8)
 - Proposed Green Corridor (9)
- Access, Recreation & Interpretation**
- Proposed Riparian Corridor (9)
 - Proposed Wildlife Site (10)
 - Proposed GNR Circular Long Distance Route (11)
 - Proposed New Permissive Route (11)
 - Proposed Public Right of Way Diversion (12)
 - Proposed Public Right of Way Deletion (12)
 - Solar Farm Visitor Hub (13)
 - Clean Energy Information (14)
 - Ecology/Landscape Information (14)
 - Heritage Information (14)

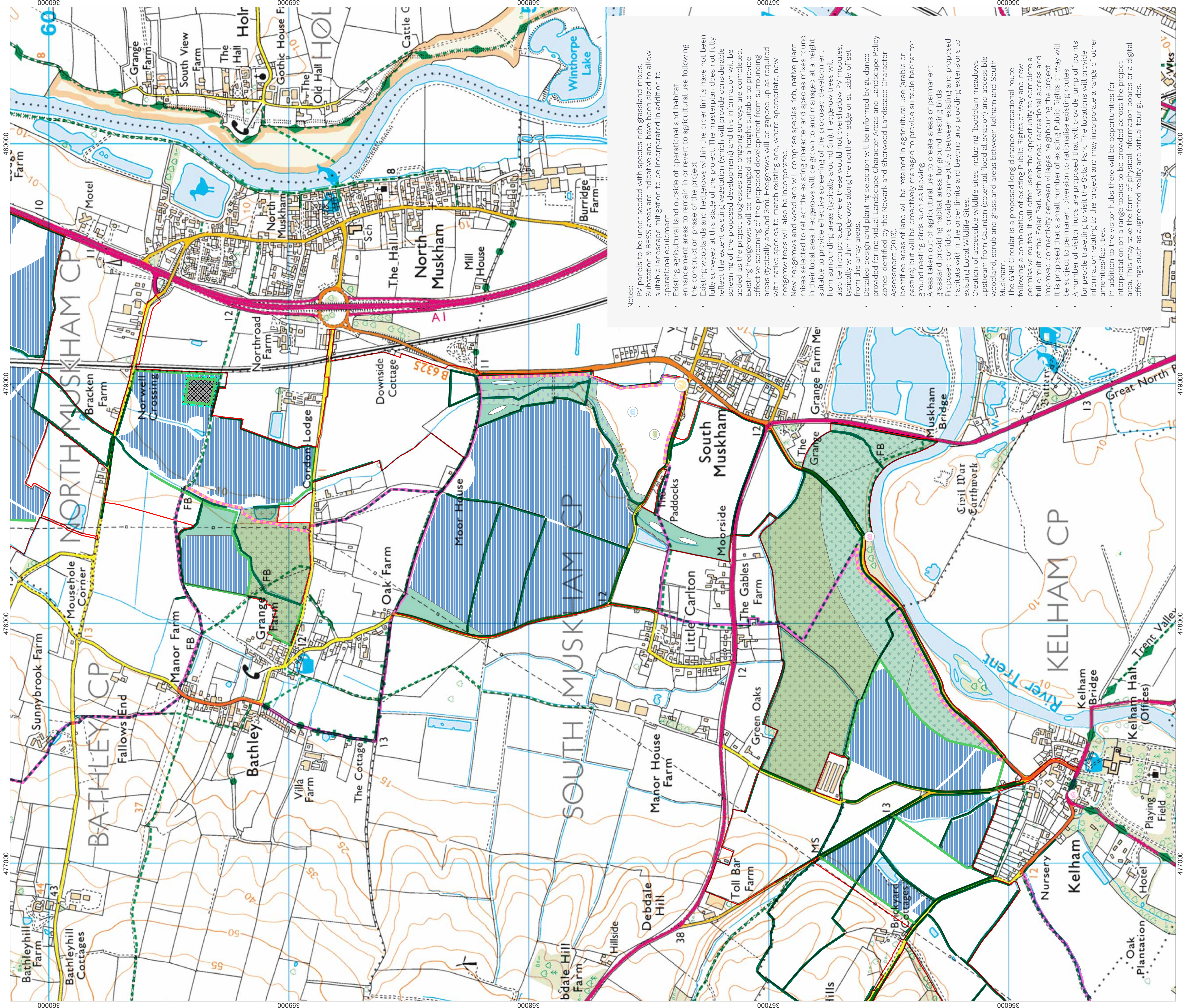


Produced By:	Ref:
Checked By:	Date: 15/01/2024

Preliminary Masterplan
Detail Sheet 8

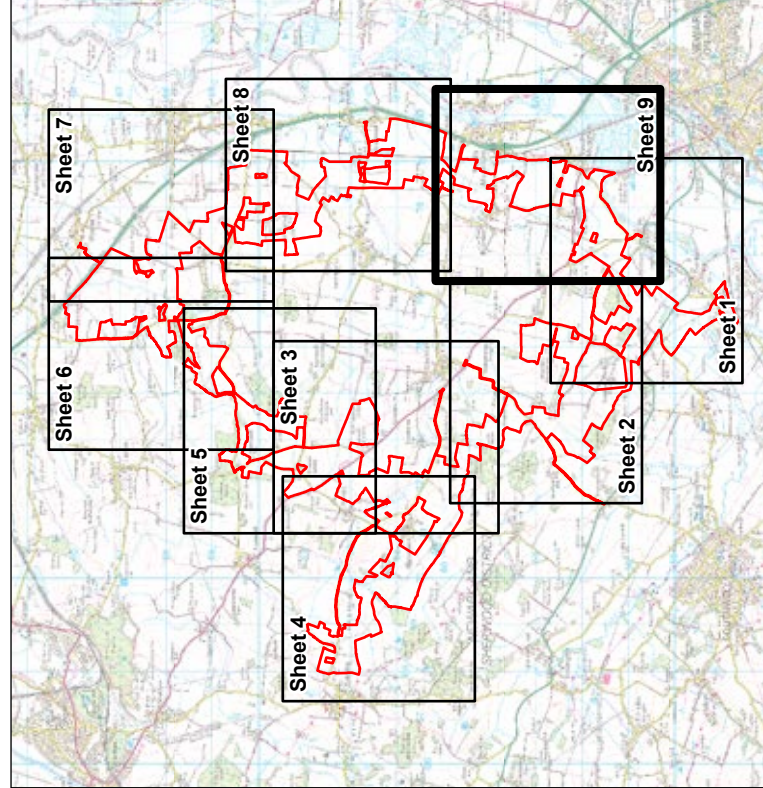
Great North Road Solar Park





- Notes:
- PV panels to be under seeded with species rich grassland mixes.
 - Substation & BESS areas are indicative and have been sized to allow suitable landscape mitigation to be incorporated in addition to operational equipment.
 - Existing agricultural land outside of operational and habitat enhancement areas to remain in or revert to agricultural use following the construction phase of the project.
 - Existing woodlands and hedgerows within the order limits have not been fully surveyed at this stage of the project. The masterplan does not fully reflect the extent existing vegetation (which will provide considerable screening of the proposed development) and this information will be added as the project progresses and ongoing surveys are completed. Existing hedgerows will be managed at a height suitable to provide effective screening of the proposed development from surrounding areas (typically around 3m). Hedgerows will be gapped up as required with native species to match existing and, where appropriate, new hedgerow trees will also be incorporated.
 - New hedgerows and woodland will comprise species rich, native plant mixes selected to reflect the existing character and species mixes found in their local area. Hedgerows will be grown to and managed at a height suitable to provide effective screening of the proposed development from surrounding areas (typically around 3m). Hedgerow trees will also be incorporated where these would not overshadow PV modules, typically within hedgerows along the northern edge or suitably offset from the array areas.
 - Detailed design and planting selection will be informed by guidance provided for Individual Landscape Character Areas and Landscape Policy Zones identified by the Newark and Sherwood Landscape Character Assessment (2013).
 - Identified areas of land will be retained in agricultural use (arable or pasture) but will be proactively managed to provide suitable habitat for ground nesting birds such as lapwing.
 - Areas taken out of agricultural use to create areas of permanent grassland providing habitat areas for ground nesting birds.
 - Proposed corridors provide connectivity between existing and proposed habitats within the order limits and beyond and providing extensions to existing Local Wildlife Sites.
 - Creation of accessible wildlife sites including floodplain meadows upstream from Cauntton (potential flood alleviation) and accessible woodland, scrub and grassland areas between Kelham and South Muskham.
 - The GNR Circular is a proposed long distance recreational route following a combination of existing Public Rights of Way and new permissive routes. It will offer users the opportunity to complete a full circuit of the Solar Park with enhanced recreational access and improved connectivity between villages neighbouring the project.
 - It is proposed that a small number of existing Public Rights of Way will be subject to permanent diversion to rationalise existing routes.
 - A number of visitor hubs are proposed that will provide jump off points for people traveling to visit the Solar Park. The locations will provide information relating to the project and may incorporate a range of other amenities/facilities.
 - In addition to the visitor hubs there will be opportunities for interpretation on a range topics to be provided across the project area. This may take the form of physical information boards or a digital offerings such as augmented reality and virtual tour guides.

- Order Limits
- Proposed Solar Panel Areas (1) - Typically offset approximately 10m from field boundaries
 - Proposed 400kV Substation Areas (2)
 - Proposed BESS Area (2)
 - Proposed Substation Areas (2)
- Landscape & Ecology
- Existing Hedgerows (4) (6)
 - Proposed Hedgerows and Broadleaf Woodland (5) (6)
 - Retained Agricultural Land - enhanced ecological management (7)
 - Proposed Permanent Grassland (8)
 - Proposed Green Corridor (9)
- Access, Recreation & Interpretation
- Proposed Riparian Corridor (9)
 - Proposed Wildlife Site (10)
 - Proposed GNR Circular Long Distance Route (11)
 - Proposed New Permissive Route (11)
 - Proposed Public Right of Way Diversion (12)
 - Proposed Public Right of Way Deletion (12)
 - Solar Farm Visitor Hub (13)
 - Clean Energy Information (14)
 - Ecology/Landscape Information (14)
 - Heritage Information (14)



Produced By:	Ref:
Checked By:	Date: 15/01/2024

Preliminary Masterplan Detail Sheet 9